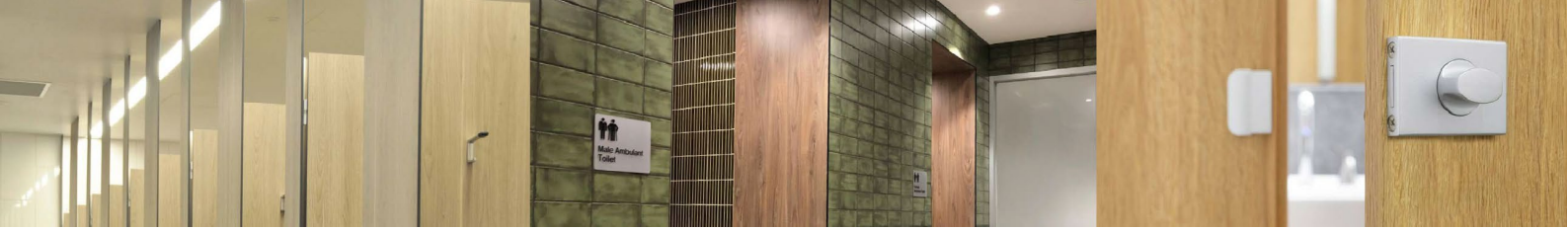




TOILET PARTITION INDUSTRIES

# CAPABILITY STATEMENT



## FROM HUMBLE BEGINNINGS

Established in 1996, Toilet Partition Industries (TPI) has seen continued success in the industry and is now seen as the leading toilet & shower partitioning company in NSW. The growth seen over this time led to expansion into Victoria in 2020 with the set-up of an office and factory in the suburb of Epping in Melbourne.

## CONFIDENCE IN OUR ABILITY

At TPI, our experienced and knowledgeable team is dedicated to delivering your project on time, in full, and defect-free. We manufacture our products here in Australia. This guarantees a quality product but also aids our commitment to provide quality wet area products consciously.

Our comprehensive approach encompasses every stage, from sales and estimating to our skilled drawings department. We excel in designing and building systems that are both functional and aesthetically pleasing. Our in-house logistics team supports our TPI-employed installation teams, ensuring every project is completed with precision and expertise.

With over 400 years of combined experience in the Building and Construction Industry, our people are committed to providing a seamless, turnkey project delivery for our clients.

## DEDICATED TO HEALTH, SAFETY AND THE ENVIRONMENT

We are committed to health, safety, and environmental sustainability. Our team undergoes regular training in risk assessment and hazard identification, with quarterly reviews of Safe Work Method Statements (SWMS) to continuously enhance safety practices. Given the risks associated with manual handling material onsite, TPI provide comprehensive "Back Safe" manual handling programs to ensure proper lifting techniques and utilise mechanical options for our employees providing logistics and installation on site. We have in-house vacuum lifters for all our manufacturing processes, also to reduce the risks of injury.

While we do not engage in high-risk activities, each job site is thoroughly assessed to maintain the highest safety standards before our delivery and installation teams arrive.

Furthermore, TPI collaborates with our suppliers to maximise recycling efforts, aligning with our Environmental Statement. We have implemented a program to send all offcuts overseas for reuse in low-cost housing projects, underscoring our commitment to sustainability and community support.

## A PROVEN TRACK RECORD

TPI is proud to have been integral to numerous iconic projects across Australia. With over 90 projects per month along the eastern seaboard, our dedicated team consistently delivers outstanding results. We have built a reputation as a reliable subcontractor, ensuring builders can trust us completely because we continue to "Install Confidence." Some of the projects we have been involved with include:

SYDNEY OPERA HOUSE  
AUSTRALIA SQUARE AUSTRALIA  
TECHNOLOGY PARK  
AMP BUILDING - 33 ALFRED STREET SYDNEY  
QUAY QUARTER TOWER - SYDNEY  
SYDNEY OLYMPIC STADIUM SYDNEY  
AIRPORT - MASCOT BROADWAY  
SHOPPING CENTRE  
NATIONAL PORTRAIT GALLERY - CANBERRA  
SYDNEY SWANS - TRAINING FACILITY  
WESTERN SYDNEY INTERNATIONAL AIRPORT - BADGERYS CREEK  
GROSVENOR PLACE - SYDNEY  
555 COLLINS STREET MELBOURNE  
PUCKAPUNYAL ARMY TRAINING CENTRE - VICTORIA  
AFLW TRAINING CENTRE OF EXCELLENCE  
SKY CITY CASINO - ADELAIDE BROOKFIELD  
TOWER - PERTH

For more details and images of these and other projects, please visit our website at [www.tpi.net.au](http://www.tpi.net.au)

Sydney Head Office | 123 Eldridge Road, Condell Park NSW 2200 | PO Box 383, Condell Park NSW 2200 P: 1300 400 711  
| P: 61 2 9709 6501 | E: [info@tpi.net.au](mailto:info@tpi.net.au)

