

PRODUCT DETAILS



SHOWER – PEDESTAL MOUNTED OVERHEAD BRACED (PO-S)



The PO-S is an enduring classic system, the VW beetle of shower cubicles. Strong, time tested and economical. The PO-S cubicle is the lowest cost design in every material used. The PO-S is found everywhere from Antarctica to Circular Quay. Functional, easy-to-clean with retro appeal. It's a crowd-pleaser.

Available as Supply & Install

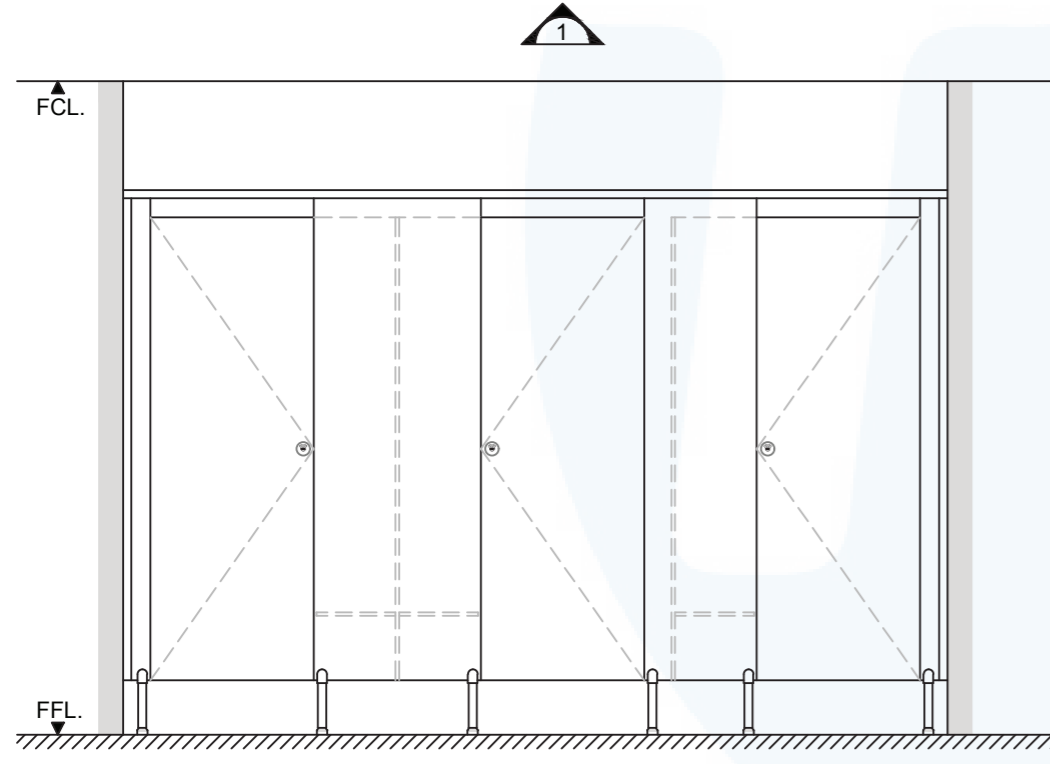
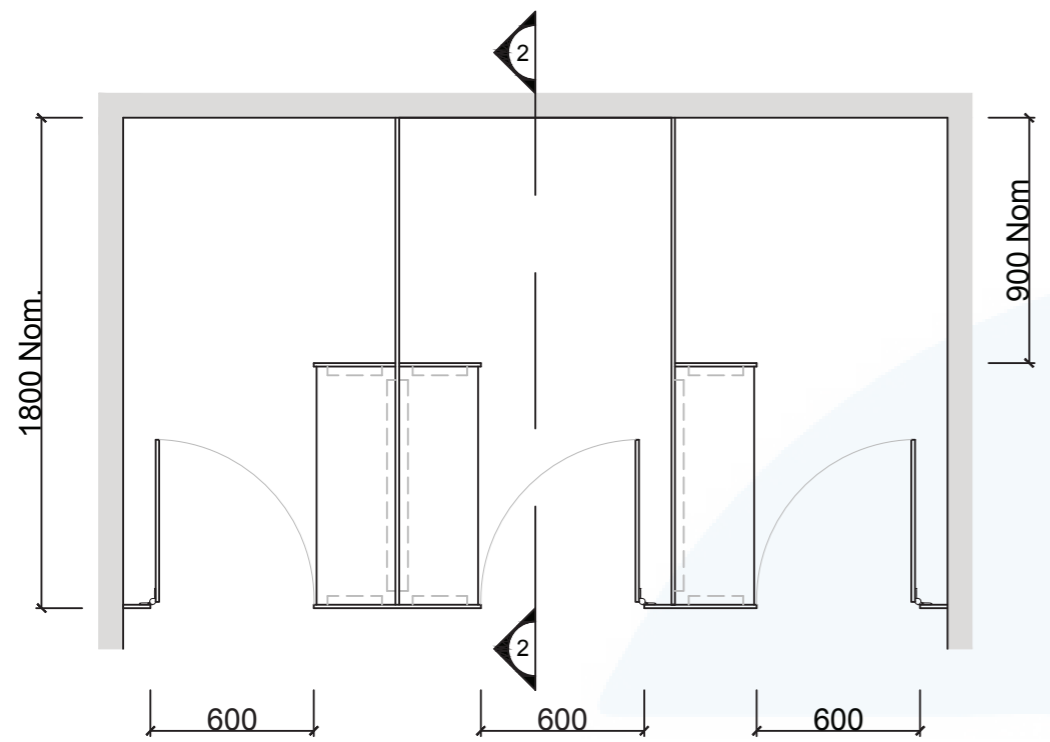
Available as Supply only

How to Specify TPI's Displayed Configuration

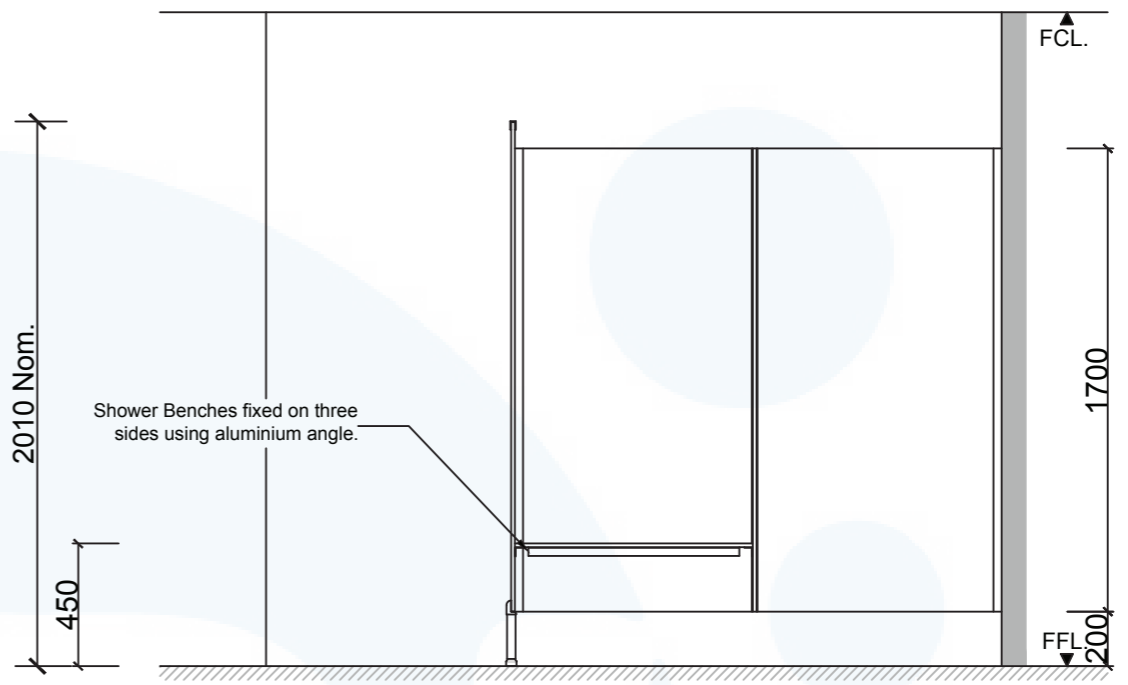
TPI PO-S-13CL Pedestal mounted Overhead braced shower with seat/shelf and splash nib. 13mm Compact Laminate. Pedestal to be 200mm Aluminium leg. Option with Modulux® Total Privacy Solution. Door Furniture to be Metlam Xcel series. Aluminium to be Square Clear Anodised. Screw Fixing.

Additional Information

Standard Dimensions	Height: 2010mm (standard) Depth: 1800mm nominal Frontal: 300mm minimum (w) Doors: 1700mm (h) x 595mm (w) – 600mm opening Ambulant Doors: 1700 mm (h) x 720-750mm (w) Shower Seat: 300mm x 900mm nominal Splash Nib: 320mm x 1700mm nominal Floor Clearance: 200mm
Material Options	13mm Compact Laminate 19mm Nuvex
Pedestal Legs	Standard 200mm Stainless Steel leg (d 32mm) 100mm Aluminium leg (d 32mm) 200mm Slim-line Aluminium leg (d 24mm) optional Black Powdercoating
Privacy Edge (optional)	TPI's patented Modulux® Total Privacy Solution for the ultimate in cubicle privacy.
Door Furniture	Metlam® Xcel series (standard) Metlam® Xcel series Black (optional) Novas Pinnacle (optional) Novas Ultima (optional) Metlam® 300 (optional)
Aluminium Profile	Square Clear Anodised Square Powdercoated Round Clear Anodised Round Powdercoated



1 FRONT ELEVATION



2 SECTION

SYSTEM

TPI-PO-S: PEDESTAL MOUNTED & OVERHEAD BRACED - SHOWER

MATERIAL AVAILABILITY

- 13mm Compact Laminate
- 19mm Nuvox Saniboard

NOTES:

ALL FIXINGS SCREWS ARE 304 GRADE STAINLESS STEEL

NOT TO SCALE

ALL DIMENSIONS ARE IN MILLIMETRES. FIGURED DIMENSIONS ARE NOMINAL ONLY. DO NOT SCALE OFF DRAWING. THIS DESIGN IS COPYRIGHT AND MAY NOT BE USED WITHOUT THE WRITTEN PERMISSION OF THE DESIGNER

DRAWING

TPI-PO-S DETAILED DESIGN

ISSUE / REVISION: 03

DWG NO.

TPI-PO-S

DATE DRAWN 22.3.17

DRAWN BY CAP

MGS

