

# PRODUCT DETAILS



## SHOWER- FULL HEIGHT (FH-S) UNISEX COMPLIANT



### NEW PRODUCT DESIGN

The FH Full Height partition system is the perfect system for complete cubicle privacy. The FH system has floor to ceiling panels and doors with clearances of 20mm FFL and 80mm FCL. The 80mm clearance at the top of the doors allows the lift off hinges to function in case of emergency. The FH partition system is the next best thing to an individual room but at a fraction of the cost.

The FH Full Height partition system is the perfect option for unisex cubicles and it complies with the NCC(BCA) 2015 F2.5(a)(i) requirements for unisex facilities. Enhanced privacy and security can be delivered by adding TPI's Modulux Total Privacy Solution which completely eliminates the door gaps.

The system's simple mounting gives the FH an elegant minimalism lifting it above mere utility. If you require a robust, high volume cubicle that sits apart from a standard public toilet aesthetic, the FH is for you.

The FH is anchored directly to the floor and therefore is only available in our waterproof materials: economical compact laminate.

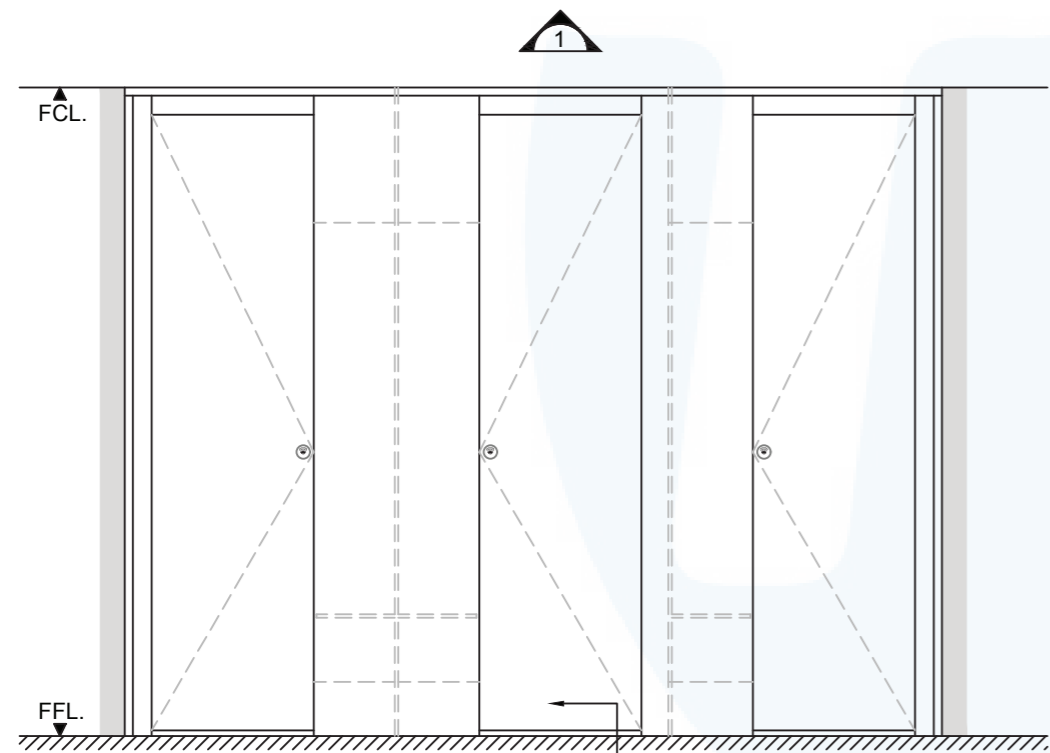
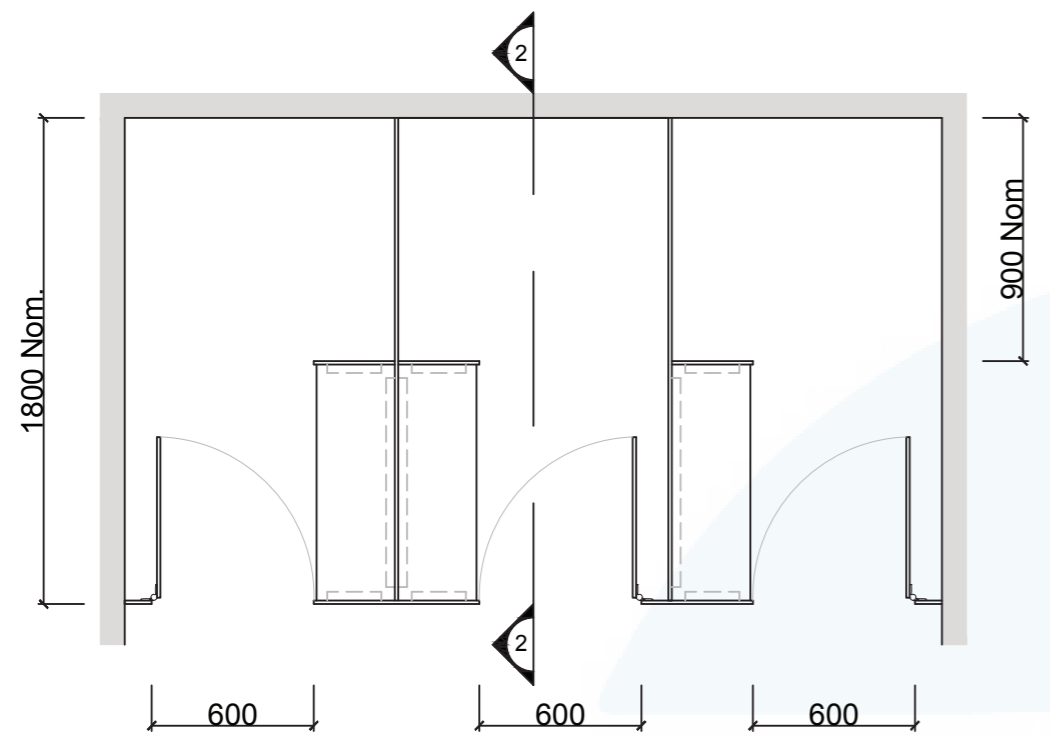
**Available as Supply & Install only.**

### How to Specify TPI's Displayed Configuration

*TPI FH-S-13CL – Full Height Shower with seat/shelf and splash nib in 13mm compact laminate. With Modulux @ Total Privacy Solution. Door Furniture to be Metlam Xcel series. Aluminum to be Square Clear Anodised. Screw fixing.*

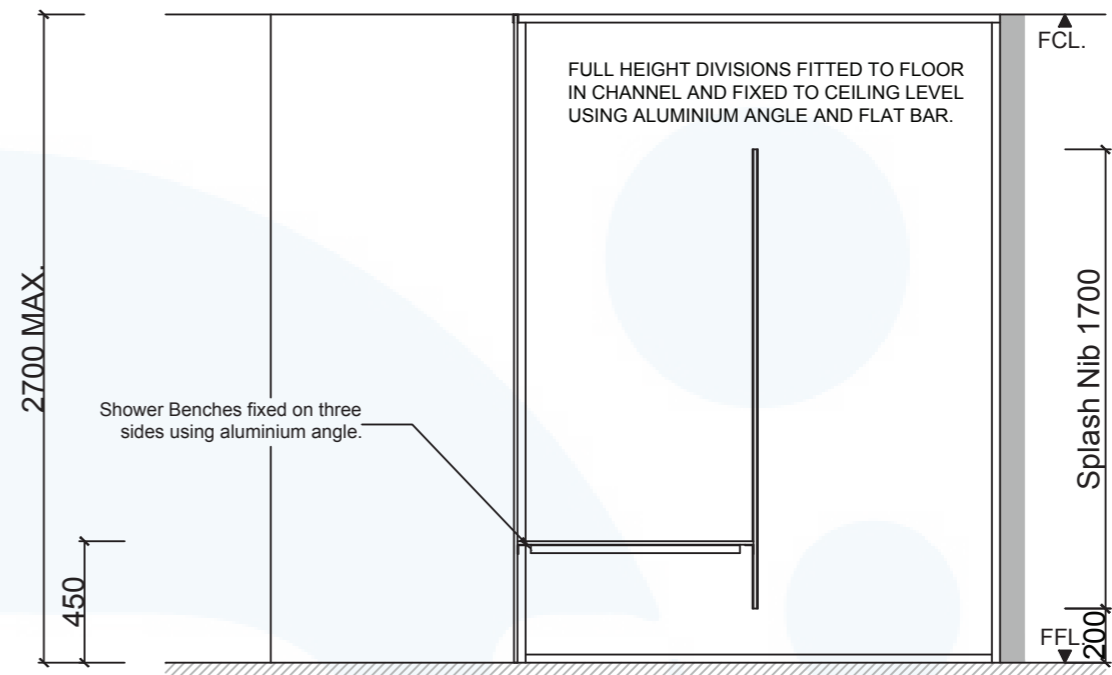
### Additional Information

<b>Standard Dimensions</b>	Height: Up to 2700mm maximum Depth: 1800mm nominal Frontal: 300mm minimum (w) Doors: Full height with 20mm off FFL & 80mm off FCL x 595mm (w) – 600mm opening Ambulant Doors: Full height with 20mm off FFL & 80mm off FCL Shower Seat: 300mm x 900mm nominal Splash Nib: 320mm x 2700mm nominal FCL x 720-750mm (w) – 700mm Min. opening
<b>Material Options</b>	13mm Compact Laminate
<b>Privacy Edge (optional)</b>	TPI's patented Modulux® Total Privacy Solution for the ultimate in cubicle privacy.
<b>Door Furniture</b>	Metlam® Xcel series (standard) Metlam® Xcel series Black (optional) Novas Pinnacle (optional) Novas Ultima (optional) Metlam® 300 (optional)
<b>Aluminium Profile</b>	Square Clear Anodised Square Powdercoated



1 FRONT ELEVATION

DOORS INSTALLED 20mm ABOVE FFL AND 70mm BELOW CHANNEL TO ALLOW LIFT OFF HINGES OPERATION



2 SECTION

**GRID CEILINGS MUST BE CHANNEL FIXED ONLY**

<b>SYSTEM</b>	
TPI-FH-S: FULL HEIGHT ( UNISEX ) - SHOWER	
<b>MATERIAL AVAILABILITY</b>	
<ul style="list-style-type: none"> <li>13mm Compact Laminate</li> </ul>	
<b>NOTES:</b>	
ALL FIXINGS SCREWS ARE 304 GRADE STAINLESS STEEL	
<b>NOT TO SCALE</b>	
ALL DIMENSIONS ARE IN MILLIMETRES. FIGURED DIMENSIONS ARE NOMINAL ONLY. DO NOT SCALE OFF DRAWING. THIS DESIGN IS COPYRIGHT AND MAY NOT BE USED WITHOUT THE WRITTEN PERMISSION OF THE DESIGNER	

<b>DRAWING</b>	
TPI-FH-S DETAILED DESIGN	
ISSUE / REVISION:	03
DWG NO.	
<b>TPI-FH-S</b>	
DATE DRAWN	17.5.17
DRAWN BY	CAP

*MGS*

