

# PRODUCT DETAILS



## TOILET CUBICLE – CEILING SUSPENDED (CS)



CS cubicles are an enduring classic in TPI's range, desirable for their appearance to float above your featured floor in defiance of gravity. Underpinning their light touch, TPI's superior engineering means our CS cubicles remain solid, ridged and sturdy, long into the future. By avoiding floor connections the CS cubicle eliminates dirt traps and mop detritus ensuring a pleasant and airy environment. Easy to clean also means lower maintenance costs.

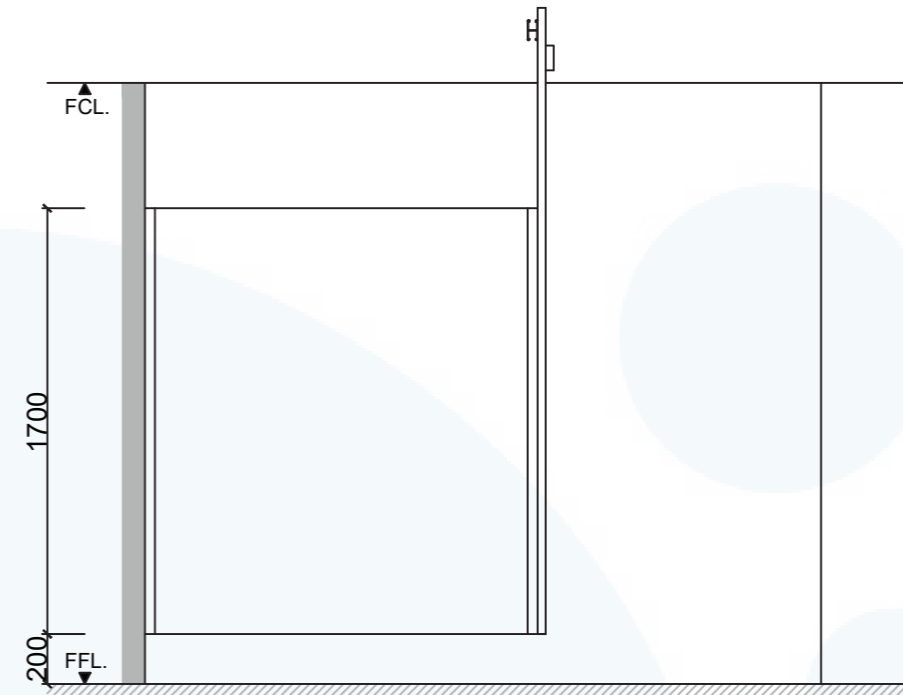
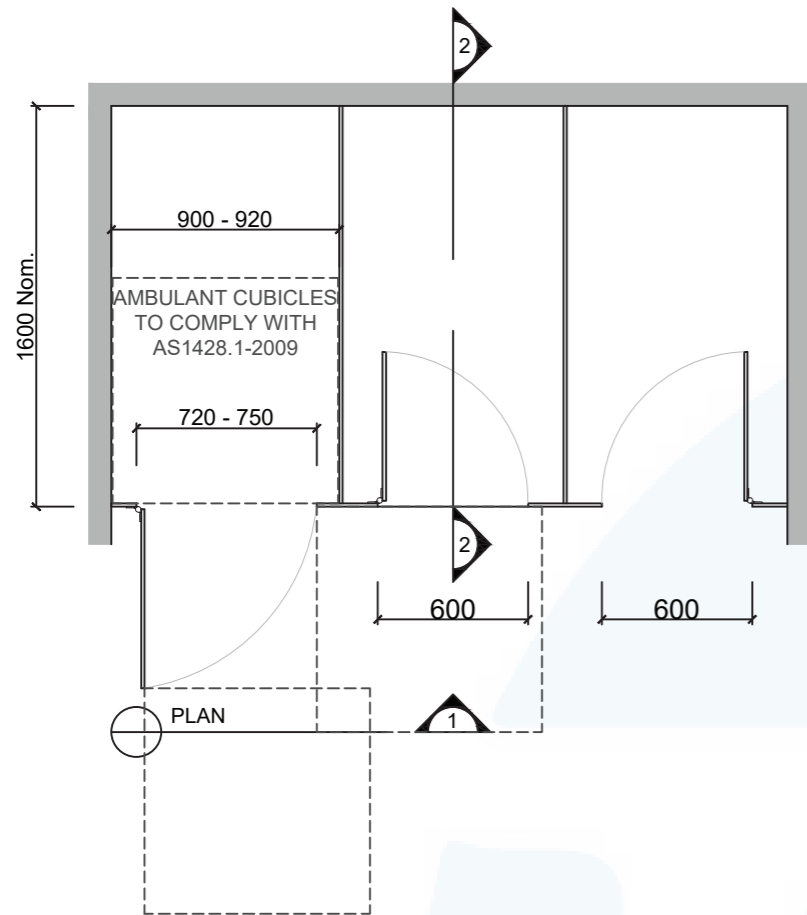
**Available as Supply & Install only.**

### How to Specify TPI's Displayed Configuration

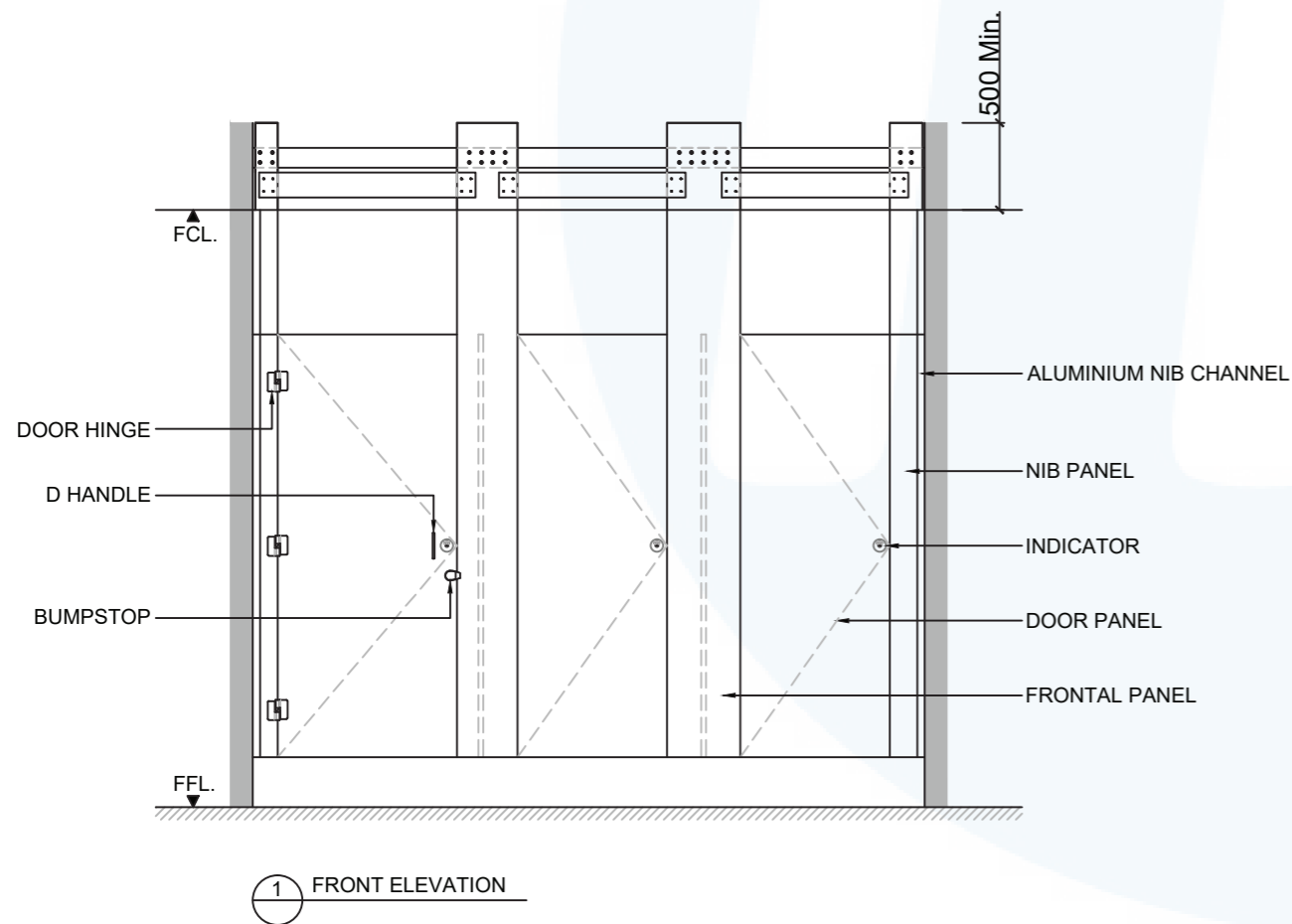
*TPI CS33L Ceiling Suspended in 33mm Decorated HMR P/Board with 18mm or 33mm divisions. Door Furniture to be Metlam Xcel series. Aluminium to be Square Clear Anodised. Screw Fixing.*

### Additional Information

<b>Standard Dimensions</b>	Height: Up to 2700mm maximum Depth: 1600mm nominal Frontal: 220mm minimum (w) for structural integrity Doors: 1700mm (h) x 595mm (w) – 600mm opening Ambulant Doors: 1700 (h) x 720-750mm (w) Floor Clearance: 200mm
<b>Material Options</b>	13mm Compact Laminate 33mm Decorated MR P/Board with 18mm divisions or 33mm Divisions
<b>Privacy Edge (optional)</b>	TPI's patented Modulux® Total Privacy Solution for the ultimate in cubicle privacy (available only in 13mm Compact Laminate)
<b>Door Furniture</b>	Metlam® Xcel series (standard) Metlam® Designer Series Black (optional) Novas Pinnacle (optional) Metlam® 300 (optional) Allgood Modric (optional 33mm board only)
<b>Aluminium Profile</b>	Square Clear Anodised Square Powdercoated



2 SECTION



SYSTEM

TPI-CS: CEILING SUSPENDED

MATERIAL AVAILABILITY

- 13mm Compact Laminate
- 32mm Laminated MR MDF w/ 18mm Divisions

NOTES:

ALL FIXINGS SCREWS ARE 304 GRADE STAINLESS STEEL

NOT TO SCALE

ALL DIMENSIONS ARE IN MILLIMETRES. FIGURED DIMENSIONS ARE NOMINAL ONLY. DO NOT SCALE OFF DRAWING. THIS DESIGN IS COPYRIGHT AND MAY NOT BE USED WITHOUT THE WRITTEN PERMISSION OF THE DESIGNER

DRAWING

TPI-CS DETAILED DESIGN

ISSUE / REVISION: 02

DWG NO.

TPI-CS

DATE DRAWN 10.5.16

DRAWN BY PB

APPROVED BY:

*MGS*

