

# PRODUCT DETAILS



## SHOWER – BLADE MOUNTED CEILING FIXED (BC-S)



BCo-S CHANNEL FIXED  
(ALUMINIUM AT CEILING JOINT)

The BC design makes good use of a high ceiling. Sitting tall on blade-mounts, fixed solidly overhead by angle-fixing or an aluminium channel, a row of BC cubicles emphasises the vertical. The firmly anchored frontals mean door & division panels can be extended above standard-height for greater privacy and prestige, while the open floor makes cleaning easy.

Mounted above the wash area, BC panels come in the full range of Compact Laminate material.

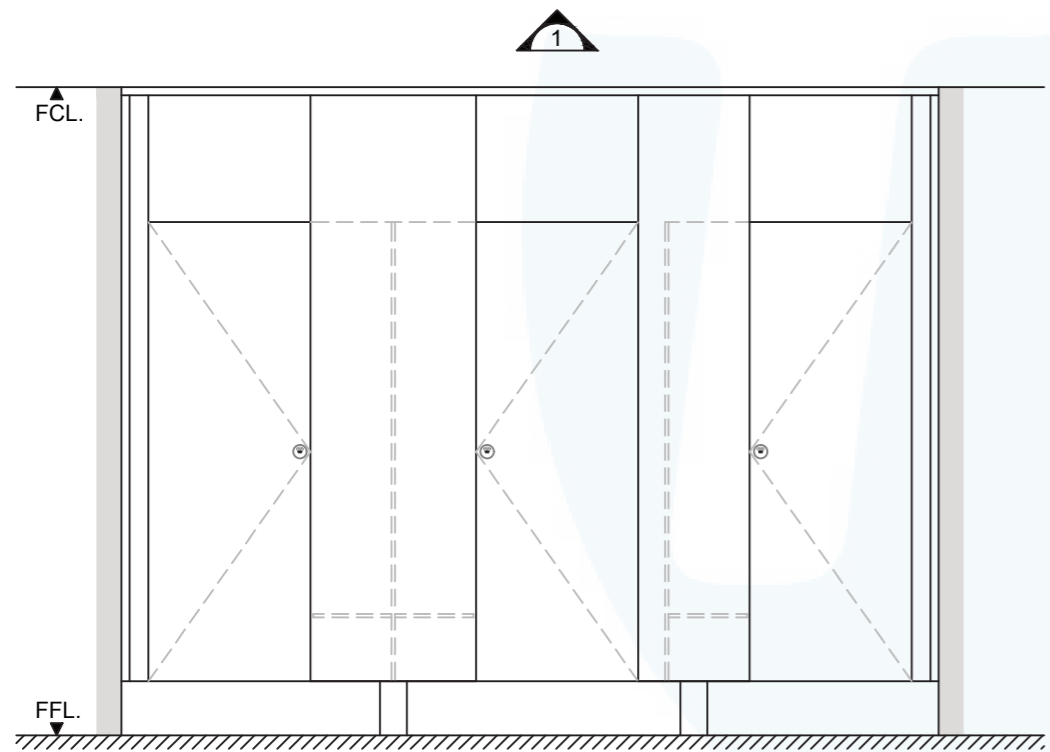
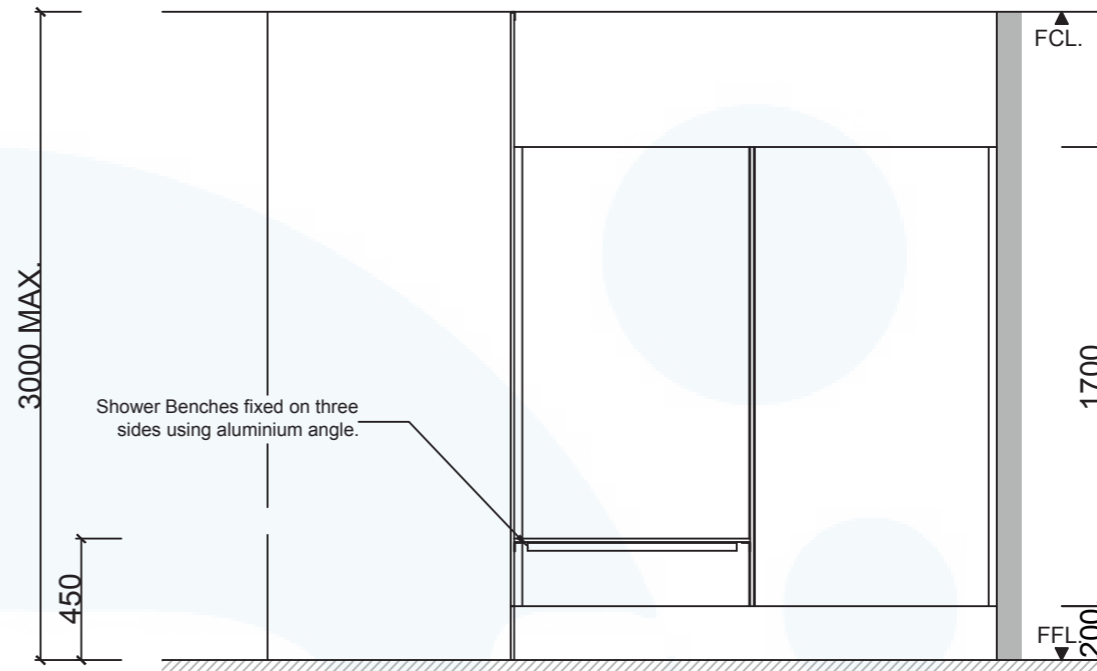
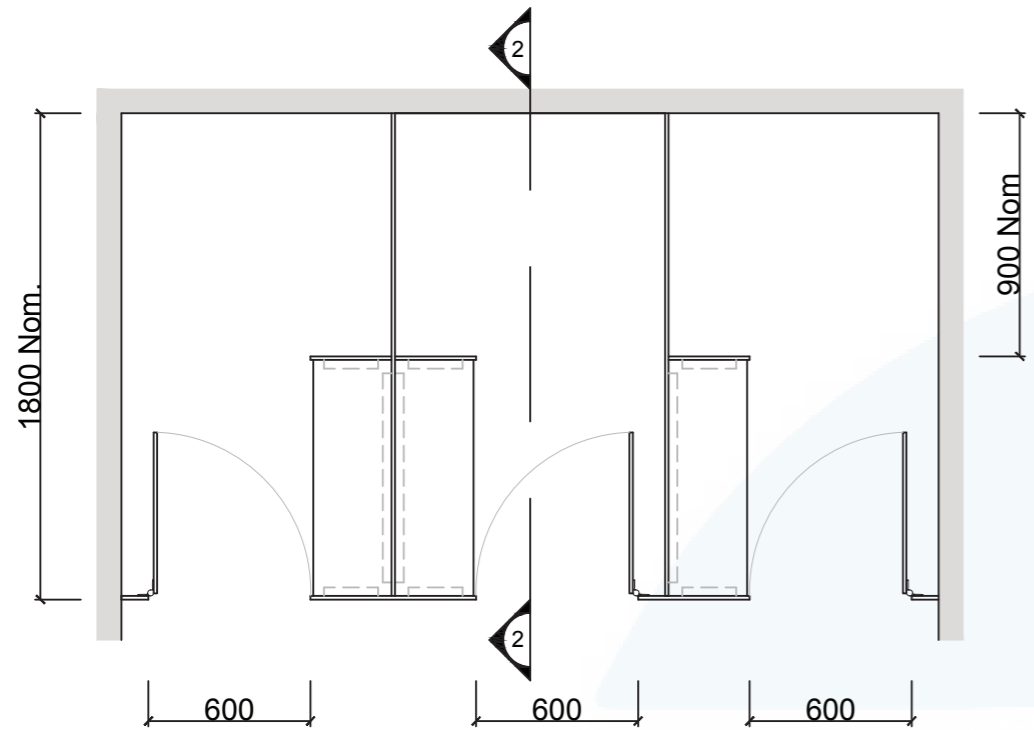
Available as Supply & Install.  
Available as Supply only.

### How to Specify TPI's Displayed Configuration

*TPI BC-S-13CL Blade mounted Ceiling fixed Shower with seat/shelf and splash nib in 13mm Compact Laminate. Option with Modulux® Total Privacy Solution. Door Furniture to be Metlam® Xcel series. Screw fixing.*

### Additional Information

<b>Standard Dimensions</b>	Height: up to 3000mm maximum Depth: 1800mm nominal Frontal: 300mm minimum (w) Doors: 1700mm (h) x 595mm (w) – 600mm opening Ambulant Doors: 1700 (h) x 720-750mm (w) Shower Seat: 300mm x 900mm nominal Splash Nib: 320mm x 1700mm nominal Floor Clearance: 200mm
<b>Ceiling Fixing</b>	BCo -S- Channel FIXED (aluminium channel visible at ceiling joint).
<b>Material Options</b>	13mm Compact Laminate
<b>Privacy Edge (optional)</b>	TPI's patented Modulux® Total Privacy Solution for the ultimate in cubicle privacy.
<b>Door Furniture</b>	Metlam® Xcel series (standard) Metlam® Xcel series Black (optional) Novas Pinnacle (optional) Novas Ultima (optional) Metlam® 300 (optional)
<b>Aluminium Profile</b>	Square Clear Anodised Square Powdercoated



2 SECTION

**GRID CEILINGS MUST BE CHANNEL FIXED ONLY**

1 FRONT ELEVATION

<b>SYSTEM</b>	
TPI-BCo-S: BLADE MOUNTED & CEILING FIXED with FULL LENGTH CHANNEL - SHOWER	
<b>MATERIAL AVAILABILITY</b>	
<ul style="list-style-type: none"> <li>13mm Compact Laminate</li> </ul>	
<b>NOTES:</b>	
ALL FIXINGS SCREWS ARE 304 GRADE STAINLESS STEEL	
<b>NOT TO SCALE</b>	
ALL DIMENSIONS ARE IN MILLIMETRES. FIGURED DIMENSIONS ARE NOMINAL ONLY. DO NOT SCALE OFF DRAWING. THIS DESIGN IS COPYRIGHT AND MAY NOT BE USED WITHOUT THE WRITTEN PERMISSION OF THE DESIGNER	

<b>DRAWING</b>	
TPI-BCo-S DETAILED DESIGN	
ISSUE / REVISION:	03
DWG NO.	
<b>TPI-BCo-S</b>	
DATE DRAWN	17.5.17
DRAWN BY	CAP

*M GS*

