

# PRODUCT DETAILS



## TOILET CUBICLE – BLADE MOUNTED CEILING FIXED (BC)



BC-O CHANNEL FIXED  
(ALUMINIUM AT CEILING JOINT)

The BC design makes good use of a high ceiling. Sitting tall on blade-mounts, fixed solidly overhead, a row of BC cubicles emphasises the vertical. The firmly anchored frontals mean door & division panels can be extended above standard-height for greater privacy and prestige, while the open floor makes cleaning easy.

Solidly engineered with a strong design flourish, the BC is ideal for surge-venues like pubs, cinemas and shopping centres where easy maintenance and making an impression matter.

Mounted above the wash area, BC panels come in the full range of Compact Laminate and Laminate Boards.

**Available as Supply & Install.**

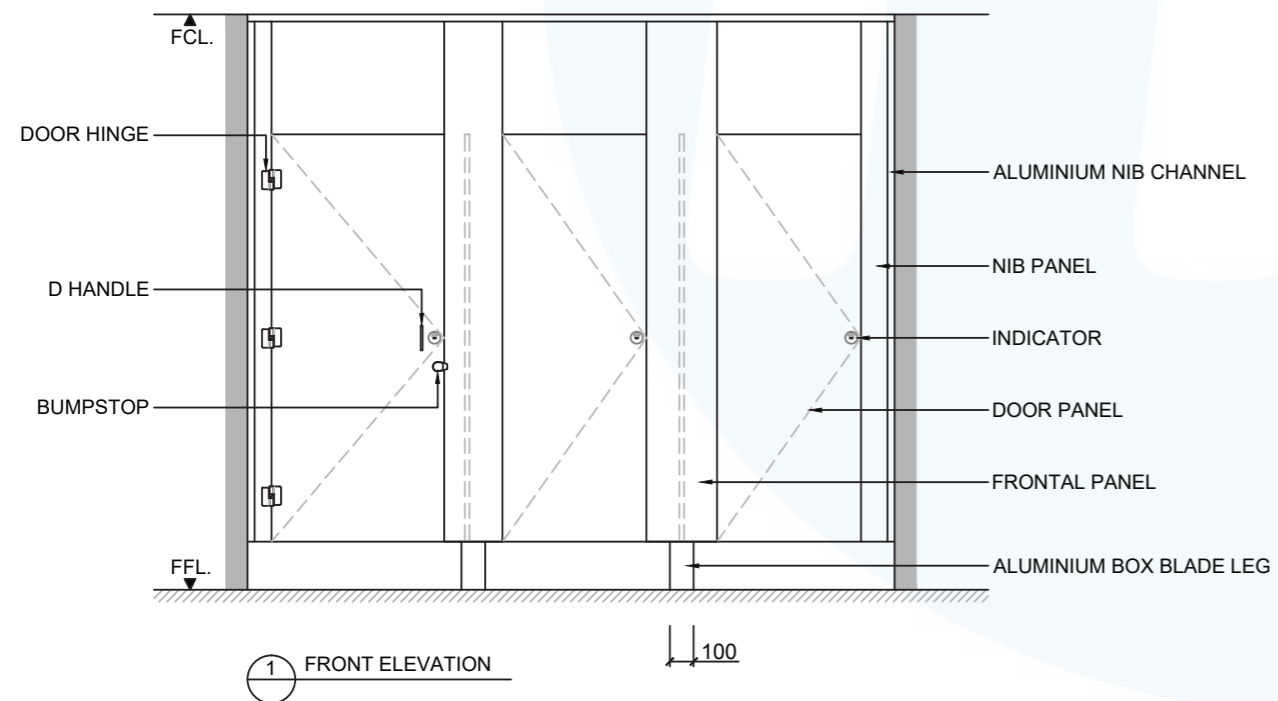
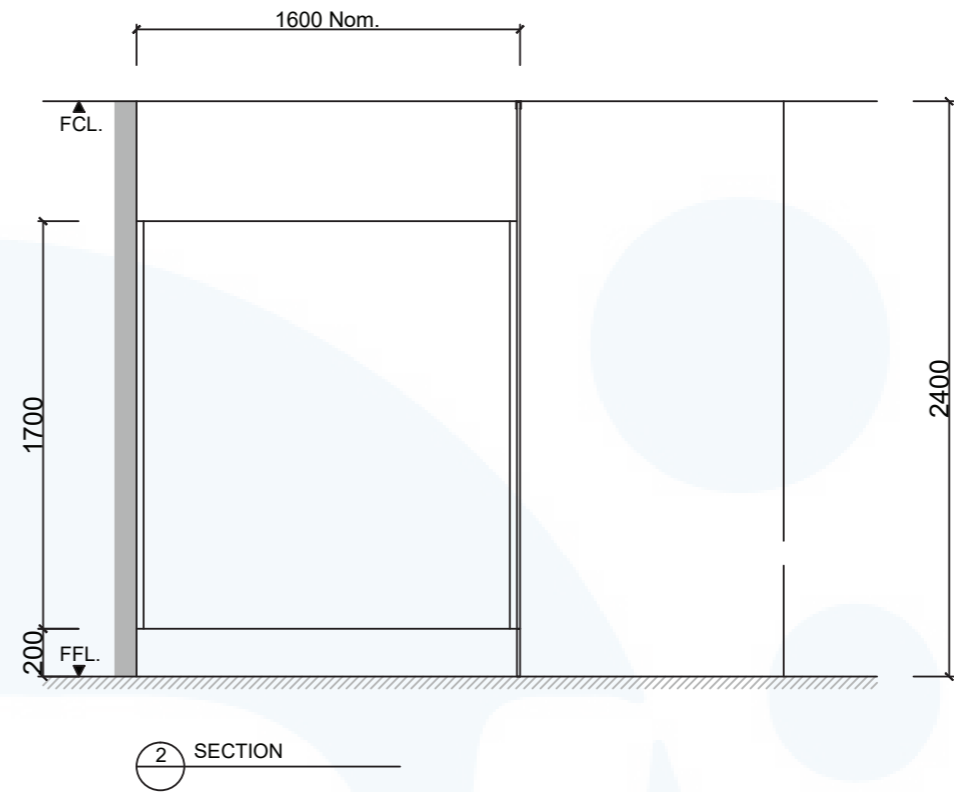
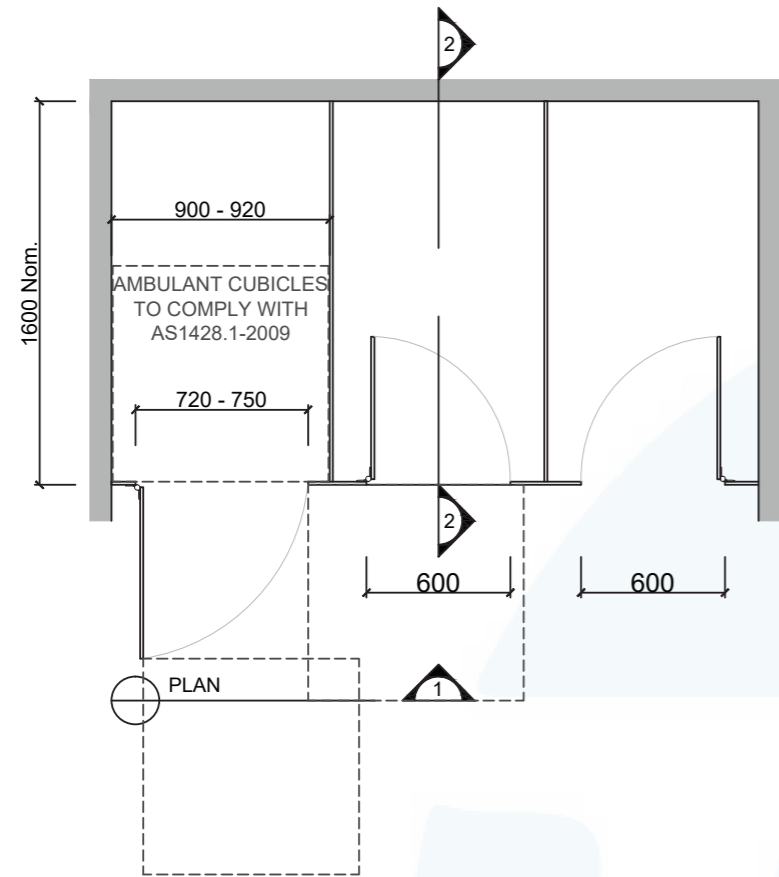
**Available as Supply only.**

### How to Specify TPI's Displayed Configuration

*TPI BC13CL Blade mounted Ceiling fixed in 13mm Compact Laminate. Option with Modulux® Total Privacy Solution. Door Furniture to be Metlam® Xcel series. Screw fixing.*

### Additional Information

<b>Standard Dimensions</b>	Height: up to 3000mm maximum Depth: 1600mm nominal Frontal: 180mm minimum (w) Doors: 1700mm (h) x 595mm (w) – 600mm opening Ambulant Doors: 1700 (h) x 720-750mm (w) Floor Clearance: 200mm
<b>Ceiling Fixing</b>	BCo – Continuous Channel (aluminium channel visible at ceiling joint)
<b>Material Options</b>	13mm Compact Laminate 18mm Decorated HMR P/Board 33mm Decorated HMR P/Board with 18mm divisions
<b>Privacy Edge (optional)</b>	TPI's patented Modulux® Total Privacy Solution for the ultimate in cubicle privacy (available only on 13mm Compact Laminate).
<b>Door Furniture</b>	Metlam® Xcel series (standard) Metlam® Designer Series Black (optional) Novas Pinnacle (optional) Metlam® 300 (optional) Allgood Modric (optional 33mm board only)
<b>Aluminium Profile</b>	Square Clear Anodised Square Powdercoated



**SYSTEM**

TPI-BCo: BLADE MOUNTED & CEILING FIXED

**MATERIAL AVAILABILITY**

- 13mm Compact Laminate
- 18mm Laminated MR MDF
- 32mm Laminated MR MDF w/ 18mm Divisions

**NOTES:**

ALL FIXINGS SCREWS ARE 304 GRADE STAINLESS STEEL

**NOT TO SCALE**

ALL DIMENSIONS ARE IN MILLIMETRES. FIGURED DIMENSIONS ARE NOMINAL ONLY. DO NOT SCALE OFF DRAWING. THIS DESIGN IS COPYRIGHT AND MAY NOT BE USED WITHOUT THE WRITTEN PERMISSION OF THE DESIGNER

**DRAWING**

TPI-BCo DETAILED DESIGN

ISSUE / REVISION: 02

DWG NO.

**TPI-BCo**

DATE DRAWN 10.5.16

DRAWN BY PB

APPROVED BY:

*MGS*

