

PRODUCT DETAILS



TOILET CUBICLE – RECESSED PEDESTAL MOUNTED RECESSED OVERHEAD BRACED (RR)



An original TPI design the RR cubicle system floats in space by hiding its structural elements beyond the sight line of the external observer.

The RR cubicle system is a premium choice for prestige projects.

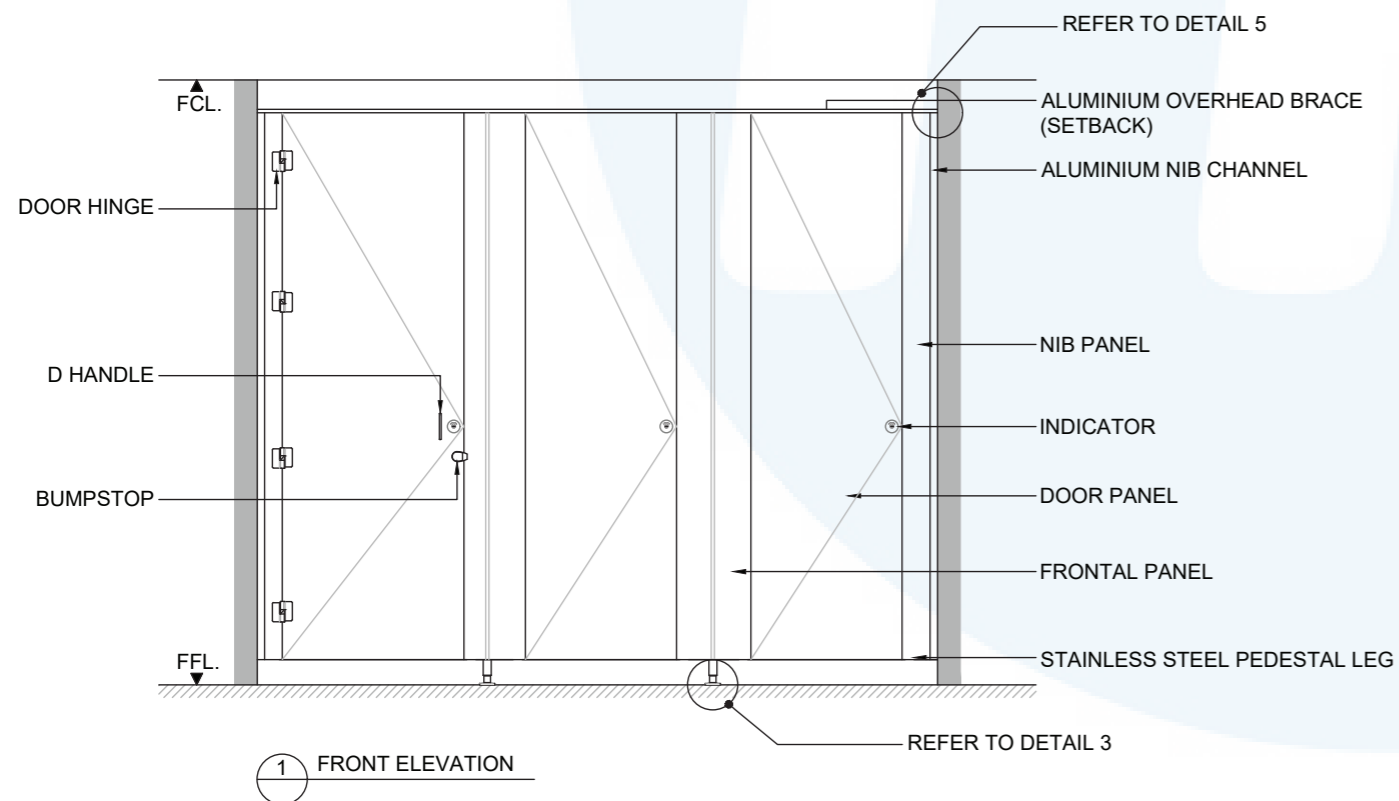
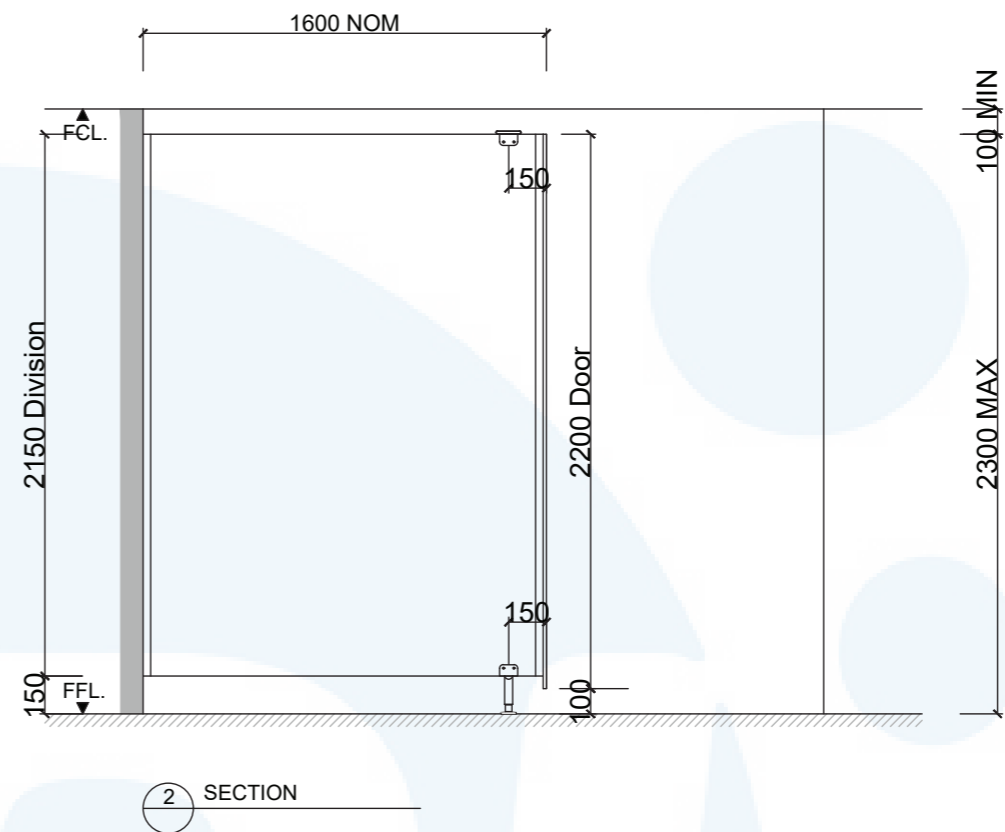
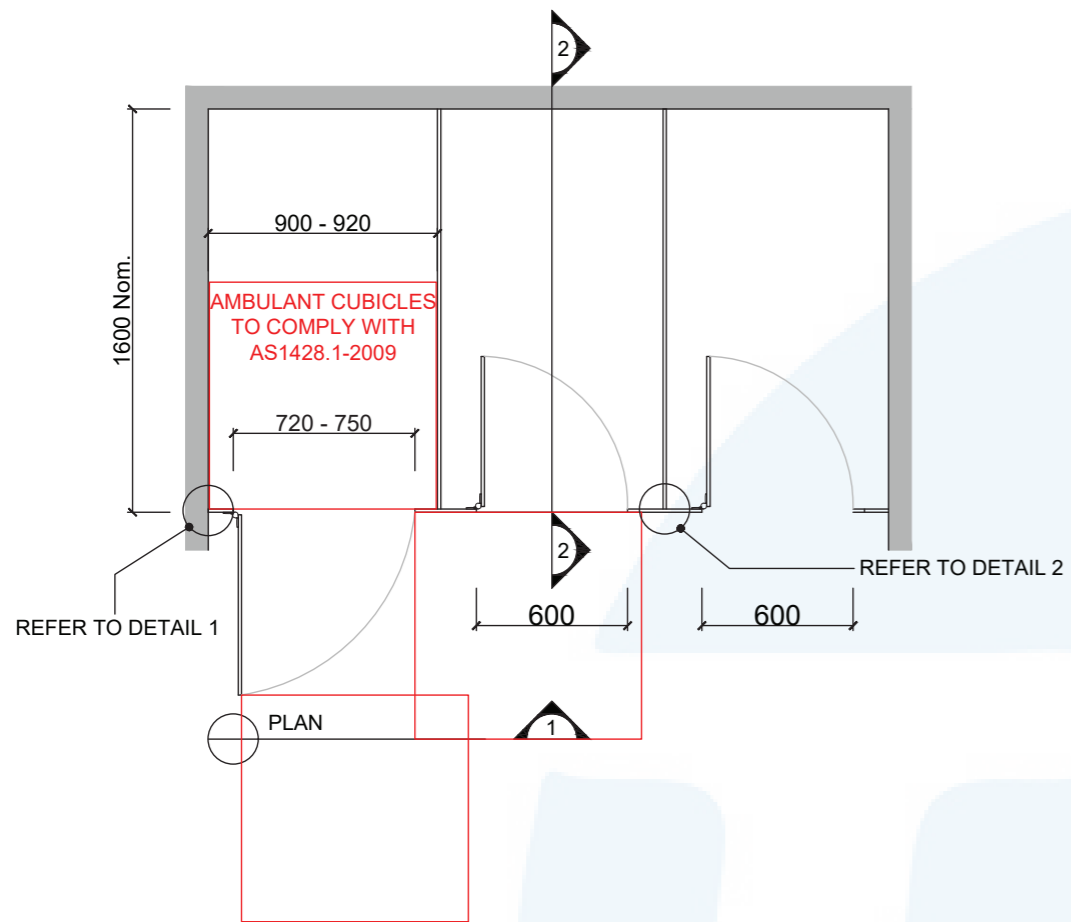
Available as Supply & Install only.

How to Specify TPI's Recommended Configuration

TPI RR13CL Recessed Pedestal Recessed Overhead braced in 13mm Compact Laminate. Pedestal mount is 150mm. Door Furniture to be Metlam Xcel series. Aluminium to be Square Clear Anodised with overhead box brace. Screw fixing.

Additional Information

Standard Dimensions	Height: Up to 2300mm maximum Depth: 1600mm nominal Frontal: 200mm minimum (w) Doors: 2200mm max (h) x 595mm (w) – 600mm opening Ambulant Doors: 2200 max (h) x 730-750mm (w) Floor Clearance: 100mm
Material Options	13mm Compact Laminate 18mm Decorated HMR P/Board Colour
Pedestal Leg	Custom 150mm Aluminium leg (d 38mm)
Door Furniture	Metlam® Xcel series (standard) Metlam® Designer Series Black (optional) Novas Pinnacle (optional) Metlam® 300 (optional) Allgood Modric (optional 32mm board only)
Aluminium Profile	Square Clear Anodised Square Powdercoated



SYSTEM

TPI-RR: RECESSED PEDESTAL MOUNTED RECESSED OVERHEAD BRACED

MATERIAL AVAILABILITY

- 13mm Compact Laminate
- 18mm Laminated MR MDF
- 18mm Timber Veneer
- 33mm Laminated MR MDF w/ 18mm Divisions
- 32mm Timber Veneer w/ 18mm Divisions

NOTES:

ALL FIXINGS SCREWS ARE 304 GRADE STAINLESS STEEL

NOT TO SCALE

ALL DIMENSIONS ARE IN MILLIMETRES. FIGURED DIMENSIONS ARE NOMINAL ONLY. DO NOT SCALE OFF DRAWING. THIS DESIGN IS COPYRIGHT AND MAY NOT BE USED WITHOUT THE WRITTEN PERMISSION OF THE DESIGNER

THIS SYSTEM MUST HAVE DIVISIONS TO BE APPLICABLE.

DRAWING

TPI-RR DETAILED DESIGN

ISSUE / REVISION: 00

DWG NO.

TPI-RR

DATE DRAWN 23.2.22

DRAWN BY AW

APPROVED BY:

MGS

