

# PRODUCT DETAILS



## SHOWER – FLOOR MOUNTED OVERHEAD BRACED (FO-S)



TPI's Floor Mounted Overhead Braced (FO) cubicle is fixed to the floor by an angle or hidden pins, then braced overhead with an aluminium channel making it a solid performer in high-volume environments. The soaring verticals gives it a modern feel, making it at home in destination retail as well as schools and sports facilities.

Rough-house strength, good economy and a contemporary feel all in one.

Mounted directly to the floor, the FO cubicle is constructed using Compact Laminate – guaranteed to perform well wet.

**Available as Supply & Install.**

**Available as Supply only.**

### How to Specify TPI's Recommended Configuration

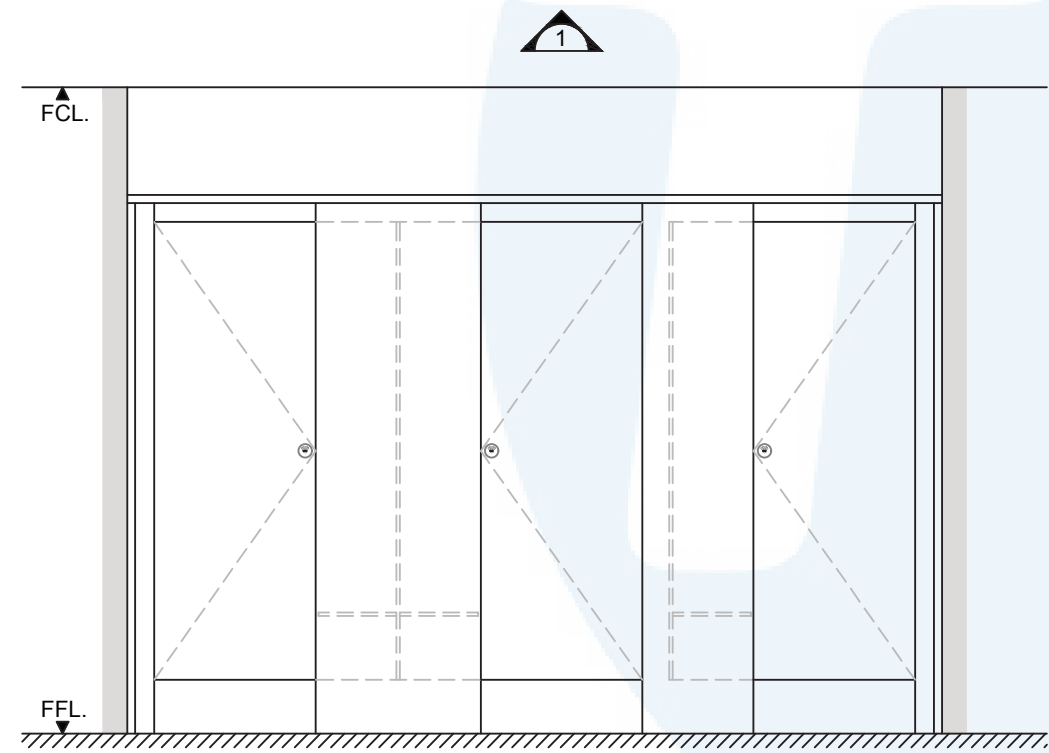
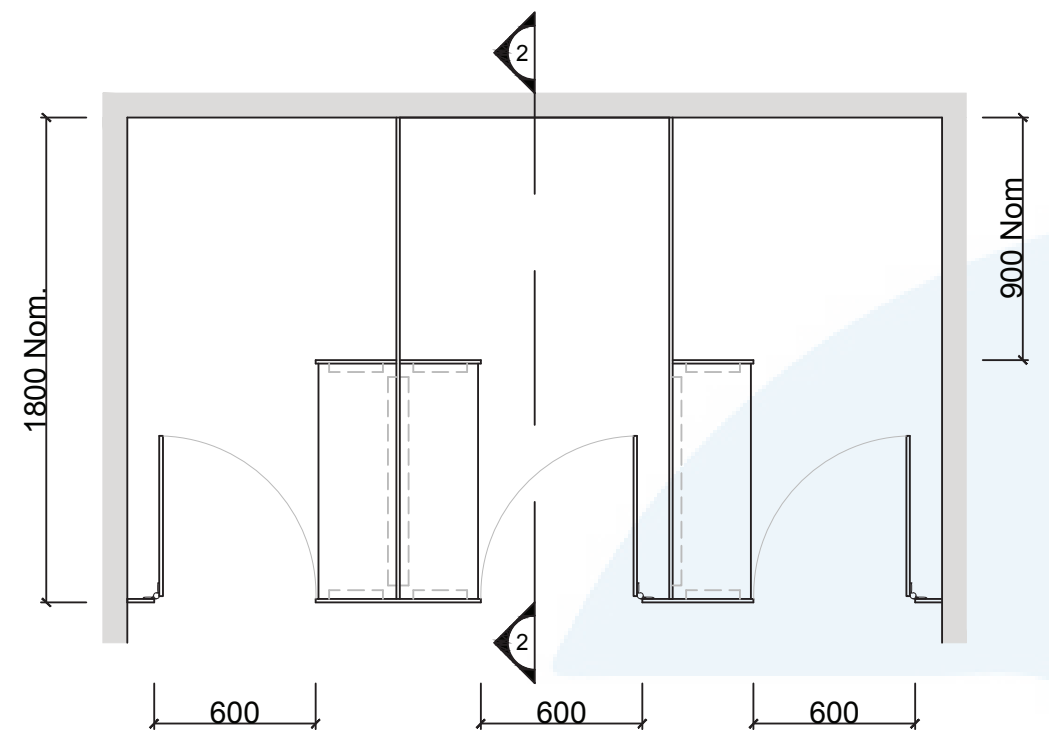
*TPI FO-S-13CL Floor Mounted Overhead Braced Shower with seat/shelf and splash nib in 13mm Compact Laminate. With Modulux® Total Privacy Solution. Door Furniture to be Metlam Xcel series. Aluminium to be Square Clear Anodised. Screw fixing.*

### Additional Information

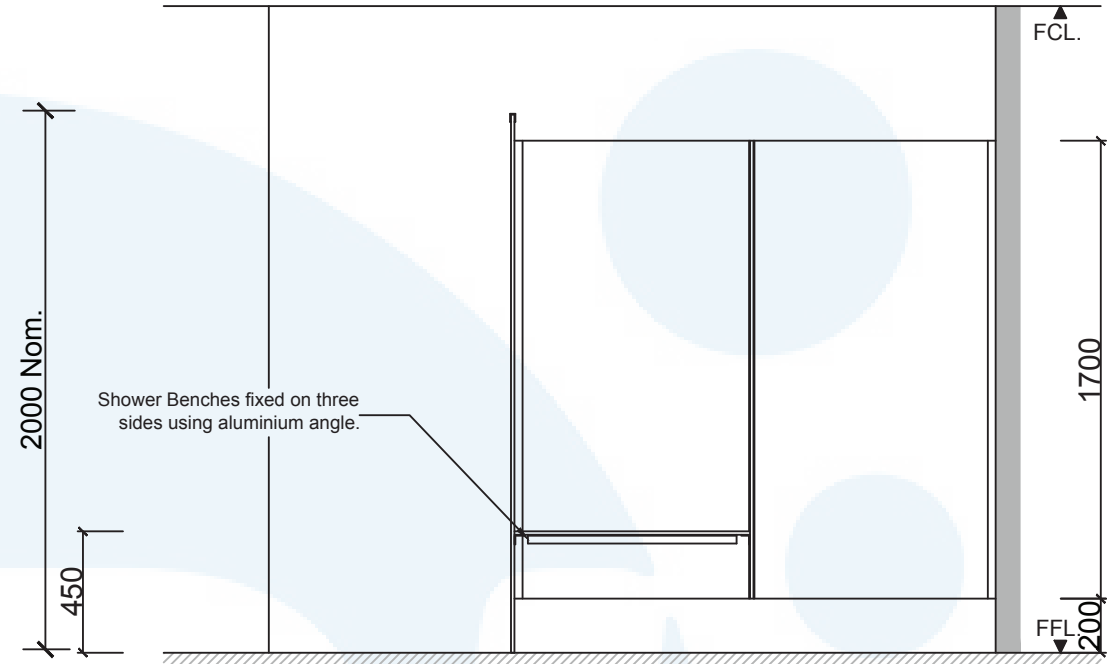
<b>Standard Dimensions</b>	Height: 2000mm (standard) Depth: 1800mm nominal Frontal: 300mm minimum (w) Doors: 1700mm (h) x 595mm (w) – 600mm opening Ambulant Doors: 1700 mm (h) x 720-750mm (w) Shower Seat: 300mm x 900mm nominal Splash Nib: 300mm x 1700mm nominal Floor Clearance: 200mm
<b>Material Options</b>	13mm Compact Laminate
<b>Privacy Edge (optional)</b>	TPI's patented Modulux® Total Privacy Solution for the ultimate in cubicle privacy (available only in 13mm Compact Laminate).
<b>Door Furniture</b>	Metlam® Xcel series (standard) Metlam® Xcel series Black (optional) Novas Pinnacle (optional) Novas Ultima (optional) Metlam® 300 (optional)
<b>Aluminium Profile</b>	Square Clear Anodised Square Powdercoated

A Division of Toilet Partition Industries Pty Ltd ABN 51 075 780 371

Head office: 123 Eldridge Rd Condell Park NSW 2200 Postal: PO Box 383 Condell Park NSW 2200  
Phone: 02 9709 6501 or 1300 400 711 Fax: 02 9709 6641 E-mail: [info@tpi.net.au](mailto:info@tpi.net.au) [www.tpi.net.au](http://www.tpi.net.au)  
Australia Wide | New Zealand | Singapore | China, Hong Kong, Macau.



1 FRONT ELEVATION



2 SECTION

SYSTEM	
TPI-FO-S: FLOOR MOUNTED & OVERHEAD BRACED - SHOWER	
MATERIAL AVAILABILITY	
<ul style="list-style-type: none"><li>13mm Compact Laminate</li><li>19mm Nuvex Saniboard</li></ul>	
NOTES:	
ALL FIXINGS SCREWS ARE 304 GRADE STAINLESS STEEL	
NOT TO SCALE	
ALL DIMENSIONS ARE IN MILLIMETRES. FIGURED DIMENSIONS ARE NOMINAL ONLY. DO NOT SCALE OFF DRAWING. THIS DESIGN IS COPYRIGHT AND MAY NOT BE USED WITHOUT THE WRITTEN PERMISSION OF THE DESIGNER	
DRAWING	
TPI-FO-S DETAILED DESIGN	
ISSUE / REVISION:	03
DWG NO.	
TPI-FO-S	
DATE DRAWN	27.3.17
DRAWN BY	CAP