

PRODUCT DETAILS



SHOWER – FLOOR MOUNTED CEILING FIXED (FC-S)



The FC is one of the sturdiest systems TPI offers. Anchored by a single frontal running from floor to ceiling, with no panel or hardware joints, it's durability makes it eminently suited to weathering the daily bumps and knocks of a high volume environment. When the FC goes up it stays up.

The system's simple mounting gives the FC an elegant minimalism lifting it above mere utility. If you require a robust, high volume cubicle that sits apart from a standard public toilet aesthetic, the FC is for you.

The FC is anchored directly to the floor so only available in our waterproof material: economical compact laminate. The FC is a favourite within TPI's classic, performance and prestige ranges.

Available as Supply & Install.
Available as Supply only.

How to Specify TPI's Recommended Configuration

TPI FCo-S-13CL Floor Mounted Ceiling Fixed Shower with seat/shelf and splash nib in 13mm Compact Laminate. With Modulux® Total Privacy Solution. Door Furniture to be Metlam Xcel series. Aluminium to be Square Clear Anodised. Screw fixing.

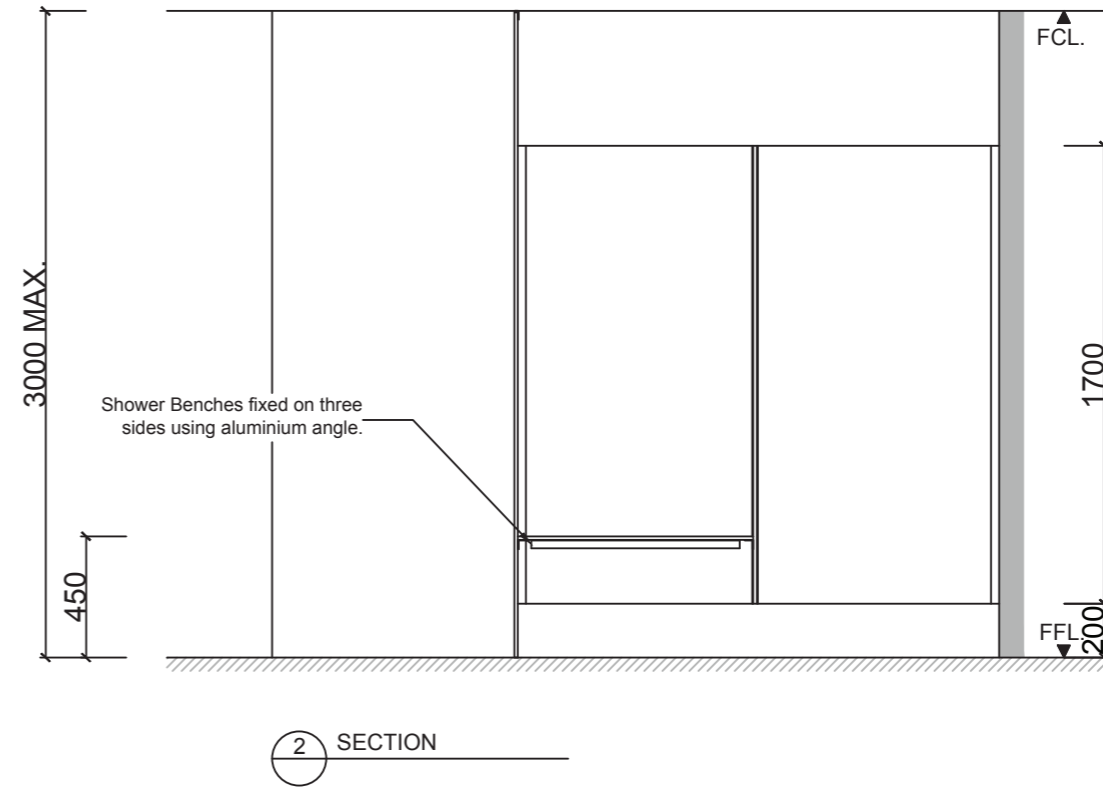
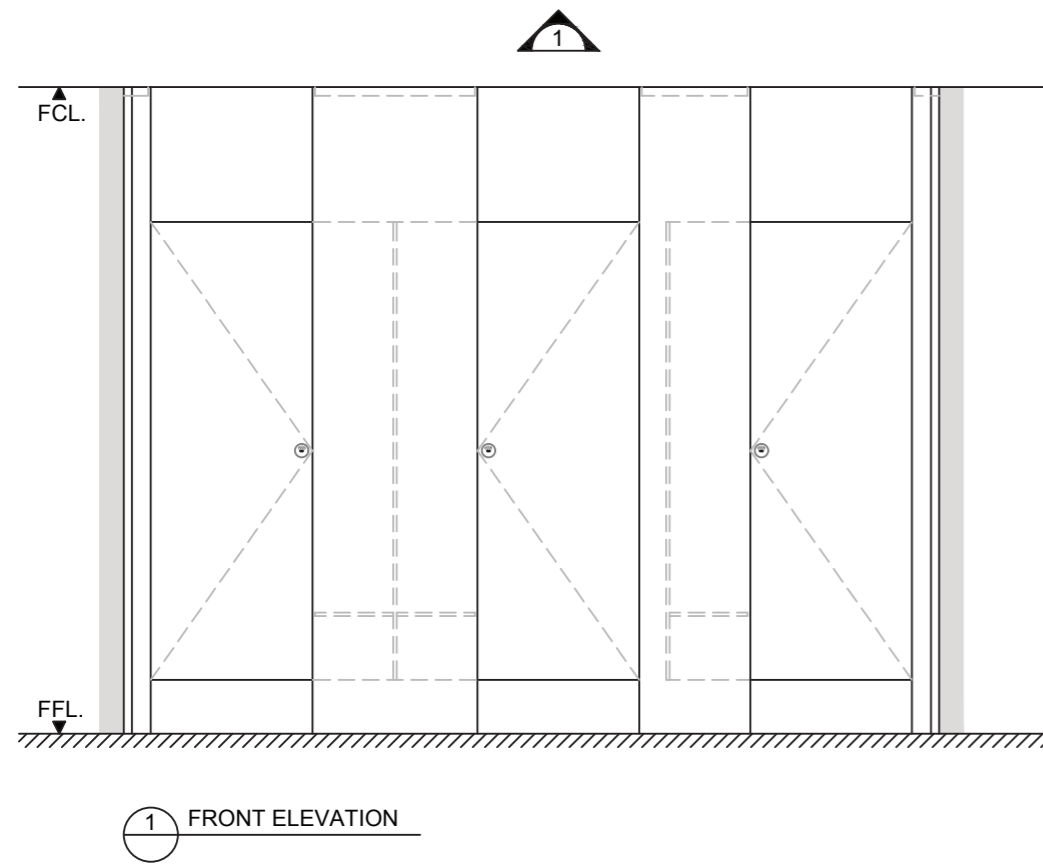
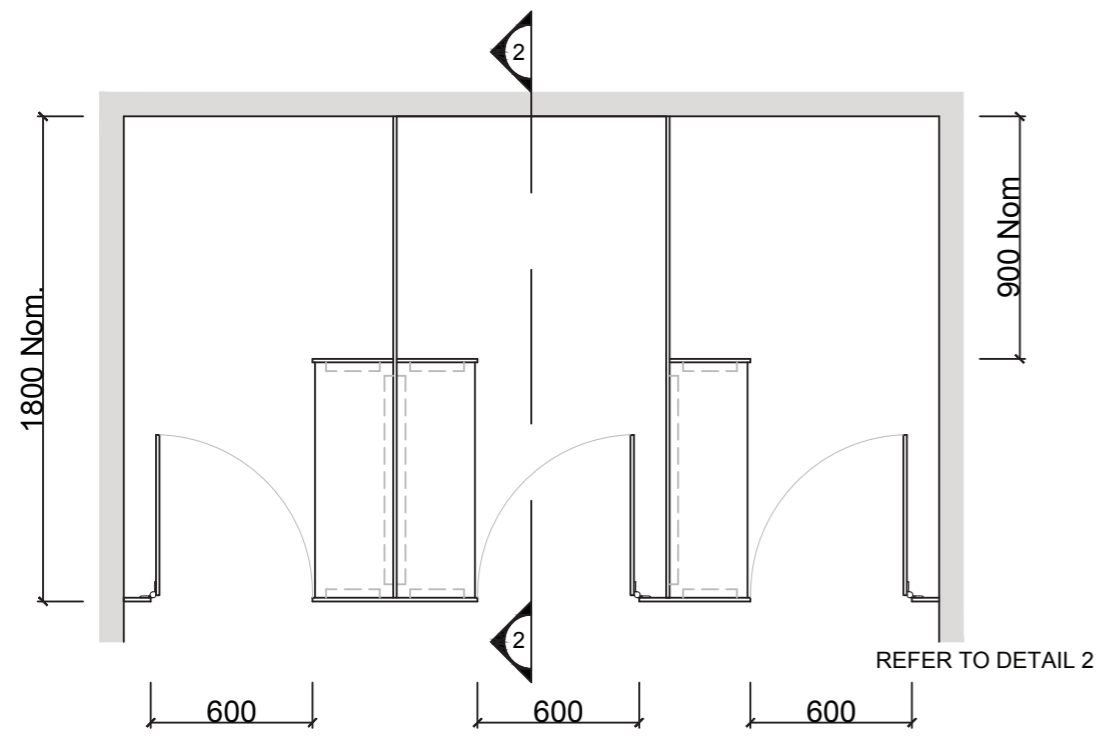


Additional Information

Standard Dimensions	Height: Up to 3000mm maximum Depth: 1800mm nominal Frontal: 300mm minimum (w) Doors: 1700mm (h) x 595mm (w) – 600mm opening Ambulant Doors: 1700mm (h) x 720-750mm (w) Shower Seat: 300mm x 900mm nominal Splash Nib: 300mm x 1700mm nominal Floor Clearance: 200mm
Ceiling Fixing	FCa-S – Angle Fixed (fixings discreet but will require secure fixing points above the ceiling) FCo-S – Continuous Channel (aluminium channel visible at ceiling joint). This more robust fixing option and does not require extra secure fixing points.
Material Options	13mm Compact Laminate
Privacy Edge (optional)	TPI's patented Modulux® Total Privacy Solution for the ultimate in cubicle privacy.
Door Furniture	Metlam® Xcel series (standard) Metlam® Xcel series Black (optional) Novas Pinnacle (optional) Novas Ultima (optional) Metlam® 300 (optional)
Aluminium Profile	Square Clear Anodised Square Powdercoated

A Division of Toilet Partition Industries Pty Ltd ABN 51 075 780 371

Head office: 123 Eldridge Rd Condell Park NSW 2200 Postal: PO Box 383 Condell Park NSW 2200
Phone: 02 9709 6501 or 1300 400 711 Fax: 02 9709 6641 E-mail: info@tpi.net.au www.tpi.net.au
Australia Wide | New Zealand | Singapore | China, Hong Kong, Macau.



SYSTEM

TPI-FCa-S: FLOOR MOUNTED & CEILING FIXED with ANGLE - SHOWER

MATERIAL AVAILABILITY

- 13mm Compact Laminate

NOTES:

ALL FIXINGS SCREWS ARE 304 GRADE STAINLESS STEEL

NOT TO SCALE

ALL DIMENSIONS ARE IN MILLIMETRES. FIGURED DIMENSIONS ARE NOMINAL ONLY. DO NOT SCALE OFF DRAWING. THIS DESIGN IS COPYRIGHT AND MAY NOT BE USED WITHOUT THE WRITTEN PERMISSION OF THE DESIGNER

DRAWING

TPI-FCa-S DETAILED DESIGN

ISSUE / REVISION: 03

DWG NO.

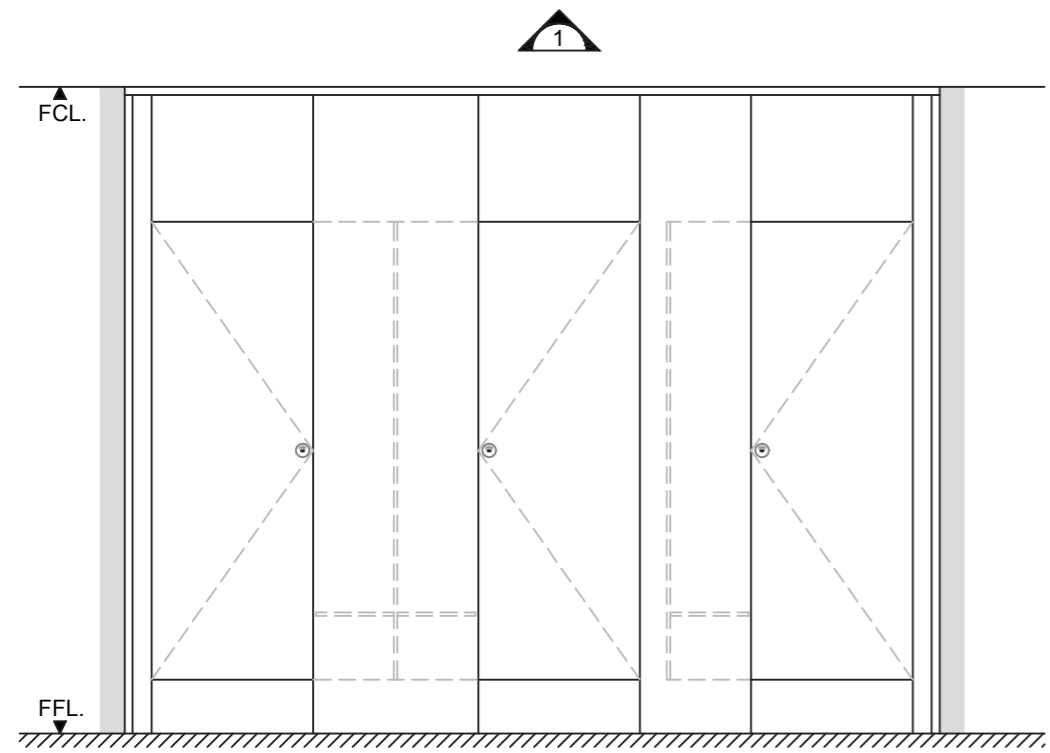
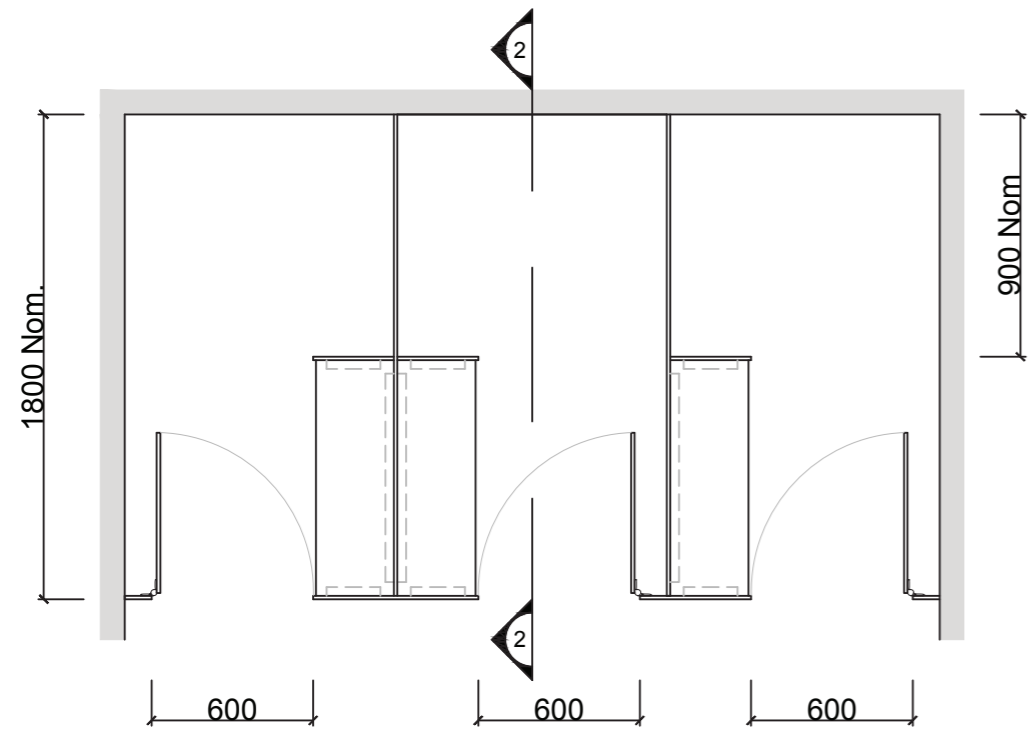
TPI-FCa-S

DATE DRAWN 17.5.17

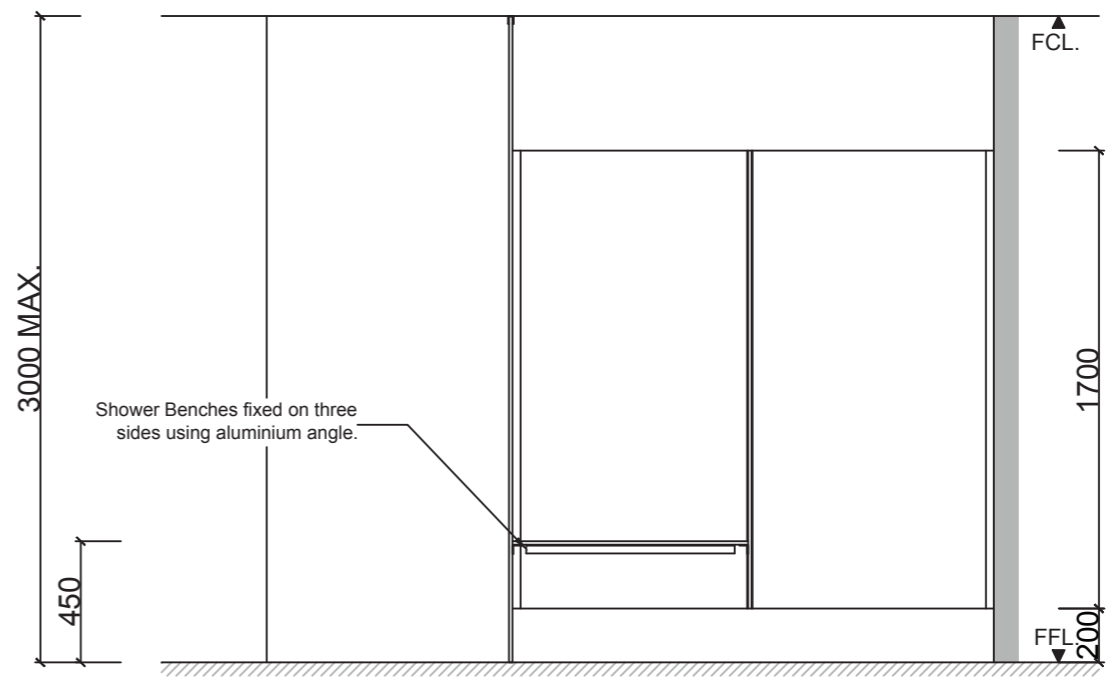
DRAWN BY CAP

MGS





1 FRONT ELEVATION



2 SECTION

SYSTEM

TPI-FCo-S: FLOOR MOUNTED & CEILING FIXED with FULL LENGTH CEILING CHANNEL - SHOWER

MATERIAL AVAILABILITY

- 13mm Compact Laminate

NOTES:

ALL FIXINGS SCREWS ARE 304 GRADE STAINLESS STEEL

NOT TO SCALE

ALL DIMENSIONS ARE IN MILLIMETRES. FIGURED DIMENSIONS ARE NOMINAL ONLY. DO NOT SCALE OFF DRAWING. THIS DESIGN IS COPYRIGHT AND MAY NOT BE USED WITHOUT THE WRITTEN PERMISSION OF THE DESIGNER

DRAWING

TPI-FCo-S DETAILED DESIGN

ISSUE / REVISION: 03

DWG NO.

TPI-FCo-S

DATE DRAWN 17.5.17

DRAWN BY CAP

MGS

