

PRODUCT DETAILS



SHOWER- BLADE MOUNTED OVERHEAD BRACED (BO-S)



The BO is the blade mounted option in TPI's overhead-braced cubicle offering, renowned for strength, functionality and economy. As with pedestal-mounts, the BO design delivers the lowest cost for materials used.

Available as Supply & Install.

Available as Supply only.

How to Specify TPI's Recommended Configuration

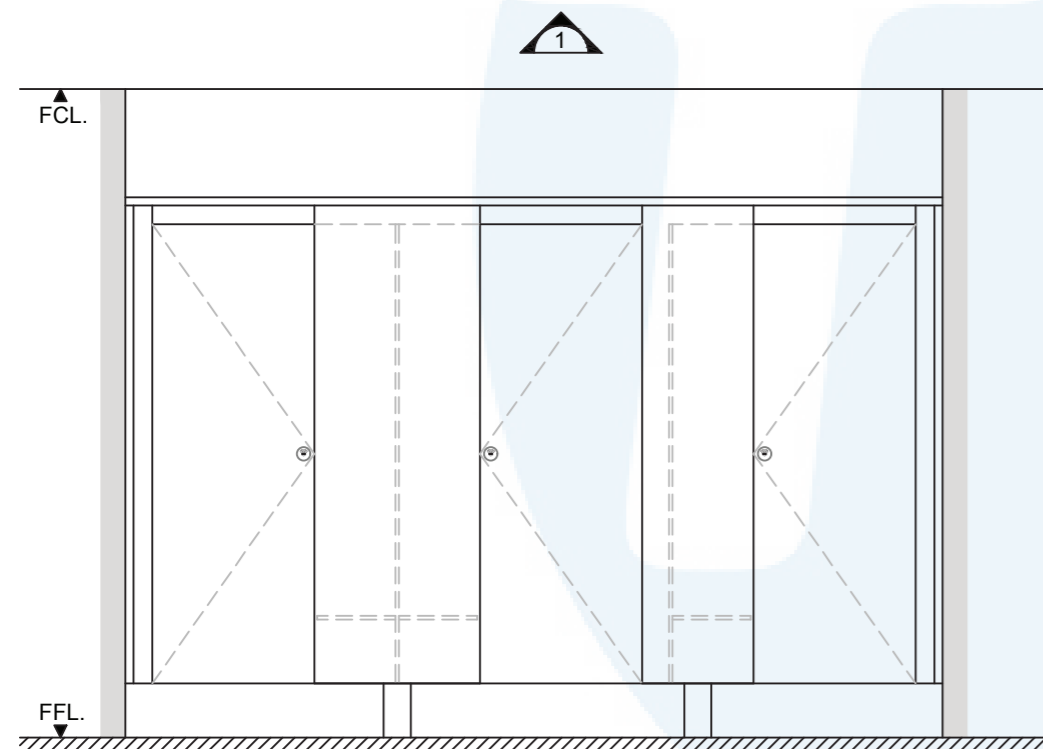
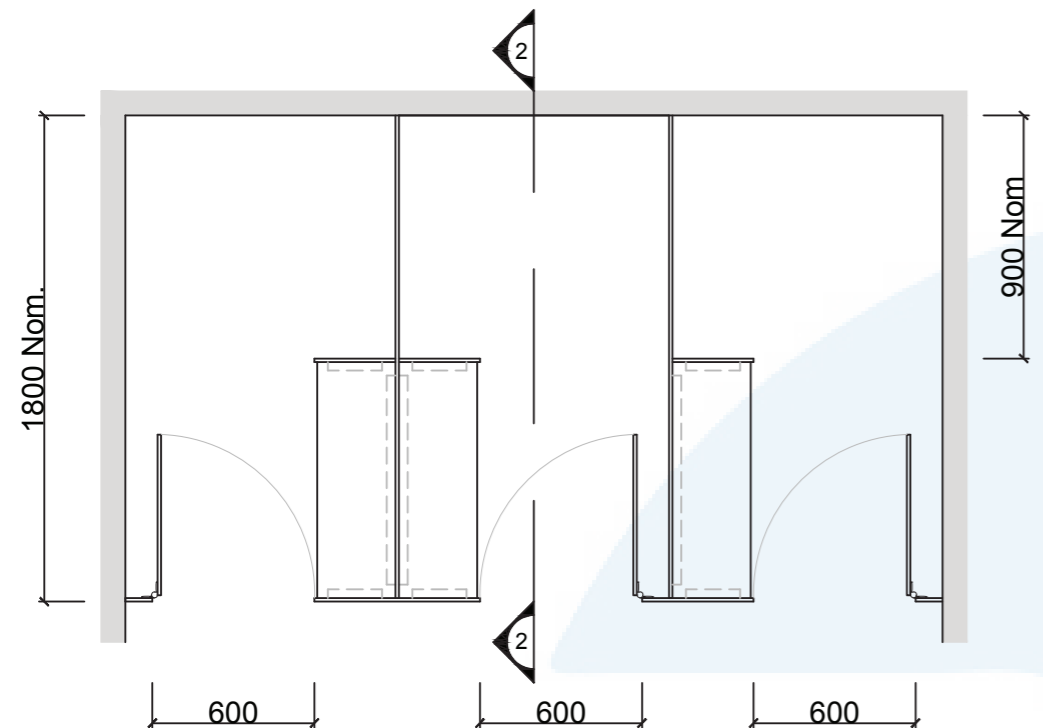
TPI BO-S-13CL Blade mounted overhead braced Shower with seat/shelf and splash nib in 13mm Compact Laminate. With Modulux® Total Privacy Solution. Door Furniture to be Metlam® Xcel series. Screw fixing.

Additional Information

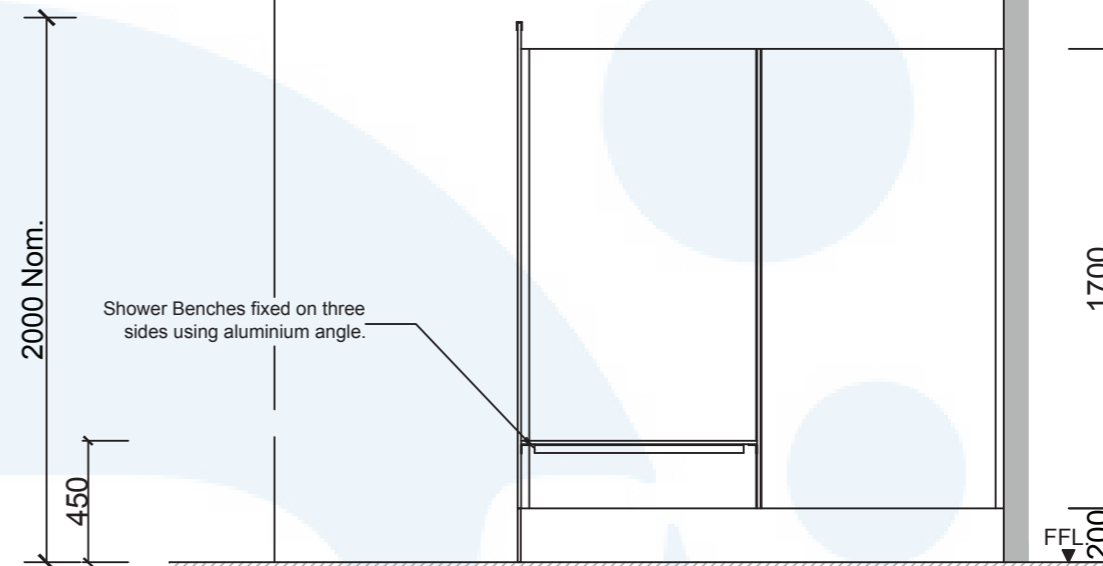
Standard Dimensions	Height: 2000mm (standard) Depth: 1800mm nominal Frontal: 300mm minimum (w) for structural integrity Doors: 1700mm (h) x 595mm (w) – 600mm opening Ambulant Doors: 1700 (h) x 720-750mm (w) Shower Seat: 300mm x 900mm nominal Splash Nib: 300mm x 1700mm nominal Floor Clearance: 200mm
Material Options	13mm Compact Laminate
Privacy Edge (optional)	TPI's patented Modulux® Total Privacy Solution for the ultimate in cubicle privacy.
Door Furniture	Metlam® Xcel series (standard) Metlam® Xcel series Black (optional) Novas Pinnacle (optional) Novas Ultima (optional) Metlam® 300 (optional)
Aluminium Profile	Square Clear Anodised Square Powdercoated

A Division of Toilet Partition Industries Pty Ltd ABN 51 075 780 371

Head office: 123 Eldridge Rd Condell Park NSW 2200 Postal: PO Box 383 Condell Park NSW 2200
Phone: 02 9709 6501 or 1300 400 711 Fax: 02 9709 6641 E-mail: info@tpi.net.au www.tpi.net.au
Australia Wide | New Zealand | Singapore | China, Hong Kong, Macau.



1 FRONT ELEVATION



2 SECTION

SYSTEM	
TPI-BO-S: BLADE MOUNTED & OVERHEAD BRACED - SHOWER	
MATERIAL AVAILABILITY	
<ul style="list-style-type: none"> 13mm Compact Laminate 	
NOTES:	
ALL FIXINGS SCREWS ARE 304 GRADE STAINLESS STEEL	
NOT TO SCALE	
ALL DIMENSIONS ARE IN MILLIMETRES. FIGURED DIMENSIONS ARE NOMINAL ONLY. DO NOT SCALE OFF DRAWING. THIS DESIGN IS COPYRIGHT AND MAY NOT BE USED WITHOUT THE WRITTEN PERMISSION OF THE DESIGNER	
DRAWING	
TPI-BO-S DETAILED DESIGN	
ISSUE / REVISION:	03
DWG NO.	
TPI-BO-S	
DATE DRAWN	22.3.17
DRAWN BY	CAP