

# PRODUCT DETAILS



## TOILET CUBICLE – FLOOR MOUNTED OVERHEAD BRACED (FO)



TPI's Floor Mounted Overhead Braced (FO) cubicle is fixed to the floor by an angle or hidden pins, then braced overhead with an aluminium channel making it a solid performer in high-volume environments. The soaring verticals gives it a modern feel, making it at home in destination retail as well as schools and sports facilities.

Rough-house strength, good economy and a contemporary feel all in one.

Mounted directly to the floor, the FO cubicle is constructed using Compact Laminate - guaranteed to perform well wet.

**Available as Supply & Install.**

**Available as Supply only.**

### How to Specify TPI's Recommended Configuration

*TPI F013CL Floor Mounted Overhead Braced in 13mm Compact Laminate. With Modulux® Total Privacy Solution. Door Furniture to be Metlam Xcel series. Aluminium to be Square Clear Anodised. Screw fixing.*

### Additional Information

<b>Standard Dimensions</b>	Height: 2000mm (standard) Depth: 1600mm nominal Frontal: 200mm minimum (w) Doors: 1700mm (h) x 595mm (w) – 600mm opening Ambulant Doors: 1700 mm (h) x 720-750mm (w) Floor Clearance: 200mm
<b>Material Options</b>	13mm Compact Laminate 10mm Compact Laminate 19mm Nuvex 19mm Design Board
<b>Privacy Edge (optional)</b>	TPI's patented Modulux® Total Privacy Solution for the ultimate in cubicle privacy (available only in 13mm Compact Laminate, 19mm Nuvex and 12mm Laminated Acrylic doors).
<b>Door Furniture</b>	Metlam® Xcel series (standard) Metlam® Designer Series Black (optional) Novas Pinnacle (optional) Metlam® 300 (optional)
<b>Aluminium Profile</b>	Square Clear Anodised Square Powdercoated Round Clear Anodised Round Powdercoated

A Division of Toilet Partition Industries Pty Ltd ABN 51 075 780 371

Head office: 123 Eldridge Rd Condell Park NSW 2200 Postal: PO Box 383 Condell Park NSW 2200  
Phone: 02 9709 6501 or 1300 400 711 Fax: 02 9709 6641 E-mail: [info@tpi.net.au](mailto:info@tpi.net.au) [www.tpi.net.au](http://www.tpi.net.au)  
Australia Wide | New Zealand | Singapore | China, Hong Kong, Macau.

**SYSTEM**

TPI-FO: FLOOR MOUNTED & OVERHEAD BRACED

**MATERIAL AVAILABILITY**

- 13mm Compact Laminate

**NOTES:**

ALL FIXINGS SCREWS ARE 304 GRADE STAINLESS STEEL

**NOT TO SCALE**

ALL DIMENSIONS ARE IN MILLIMETRES. FIGURED DIMENSIONS ARE NOMINAL ONLY. DO NOT SCALE OFF DRAWING. THIS DESIGN IS COPYRIGHT AND MAY NOT BE USED WITHOUT THE WRITTEN PERMISSION OF THE DESIGNER

**DRAWING**

TPI-FO DETAILED DESIGN

ISSUE / REVISION: 02

DWG NO.

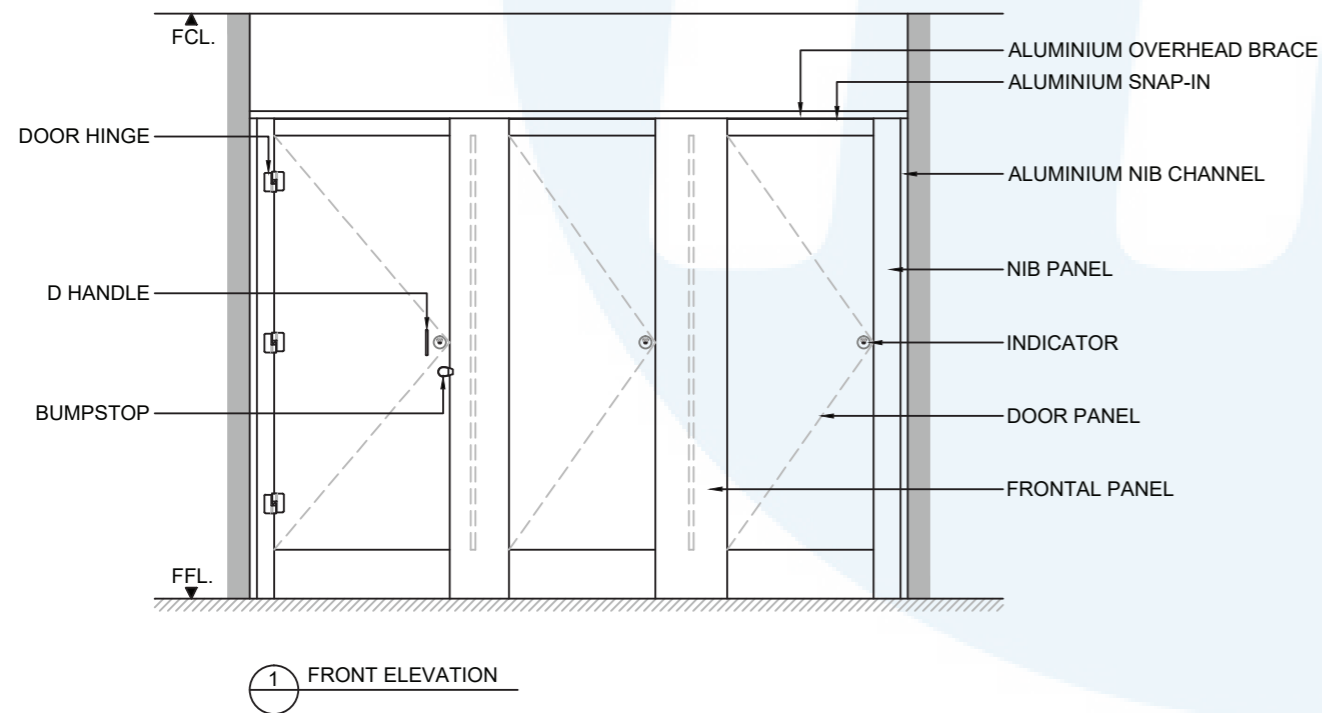
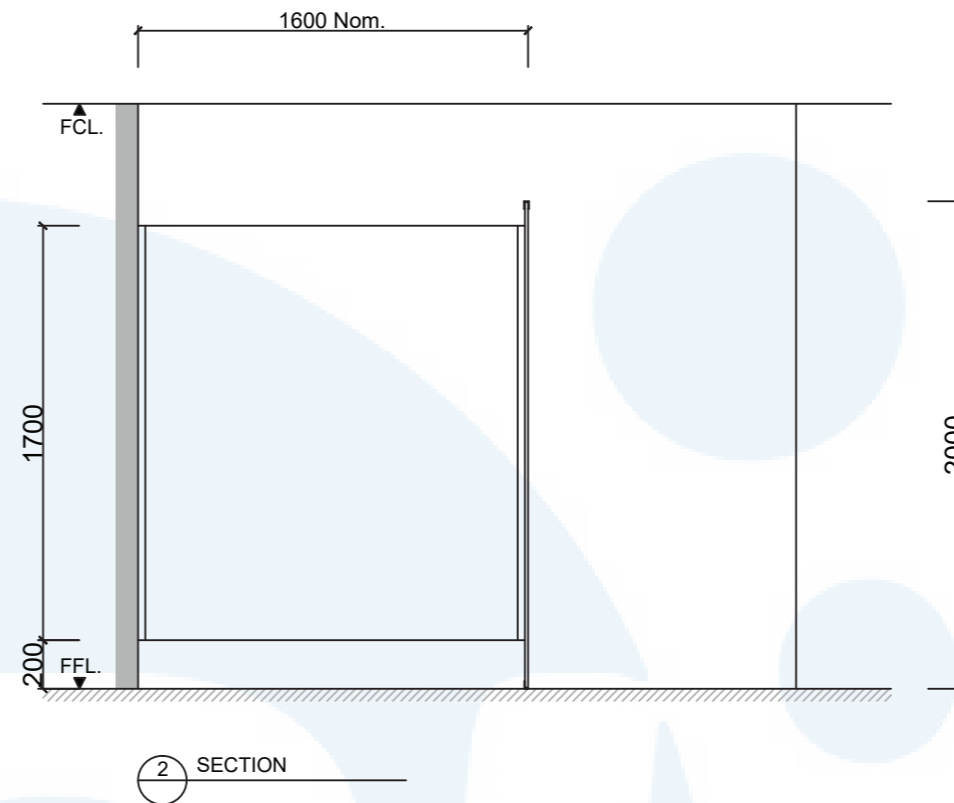
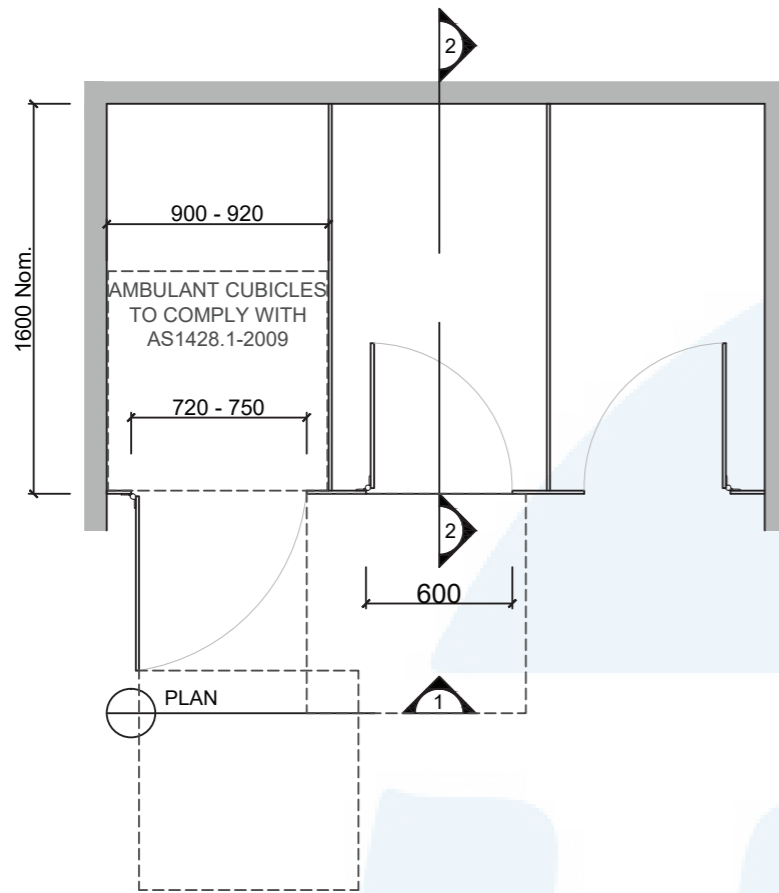
**TPI-FO**

DATE DRAWN 10.5.16

DRAWN BY PB

APPROVED BY:

*MGS*



1 FRONT ELEVATION

2 SECTION