

# PRODUCT DETAILS



## TOILET CUBICLE – CEILING SUSPENDED FLOATING BASE (CS)



CS cubicles are an enduring classic in TPI's range, desirable for their appearance to float above your featured floor in defiance of gravity. Underpinning their light touch, TPI's superior engineering means our CS cubicles remain solid, ridged and sturdy, long into the future. By avoiding floor connections the CS cubicle eliminates dirt traps and mop detritus ensuring a pleasant and airy environment. Easy to clean also means lower maintenance costs.

Available as Supply & Install only.

### How to Specify TPI's Recommended Configuration

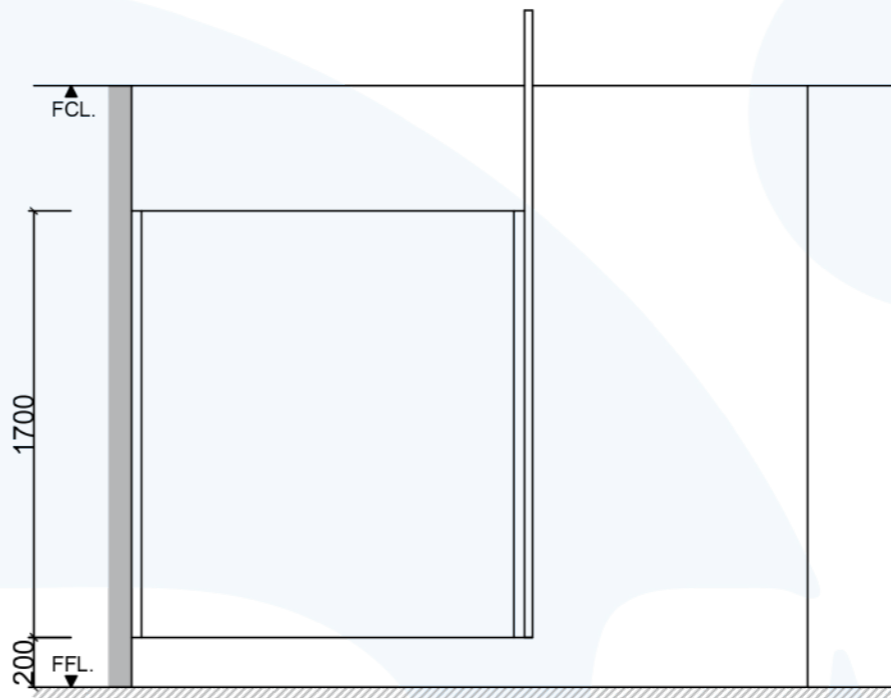
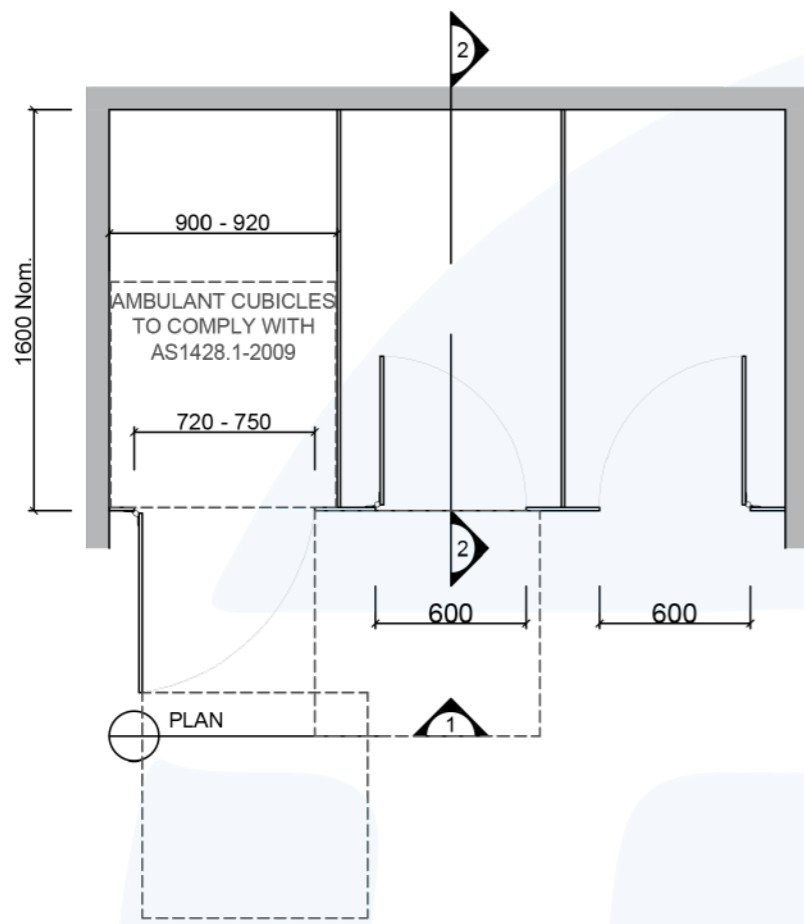
*TPI CS32L Ceiling Suspended Floating Base in 32mm Laminated Board with 18mm divisions. Door Furniture to be Metlam Xcel series. Aluminium to be Square Clear Anodised. Screw Fixing.*

### Additional Information

<b>Standard Dimensions</b>	Height: Up to 3000mm maximum Depth: 1600mm nominal Frontal: 260mm minimum (w) for structural integrity Doors: 1700mm (h) x 595mm (w) – 600mm opening Ambulant Doors: 1700 (h) x 720-750mm (w) Floor Clearance: 200mm
<b>Material Options</b>	13mm Compact Laminate 32mm Laminated Board with 18mm divisions 32mm Timber Veneer with 18mm divisions 12mm Laminated Acrylic (door only)
<b>Privacy Edge (optional)</b>	TPI's patented Modulux® Total Privacy Solution for the ultimate in cubicle privacy (available only in 13mm Compact Laminated and 12mm Laminated Acrylic doors).
<b>Door Furniture</b>	Metlam® Xcel series (standard) Metlam® Xcel series Black (optional) Novas Pinnacle (optional) Novas Ultima (optional) Metlam® 300 (optional) Allgood Modric (optional 32mm board only)
<b>Aluminium Profile</b>	Square Clear Anodised Square Powdercoated

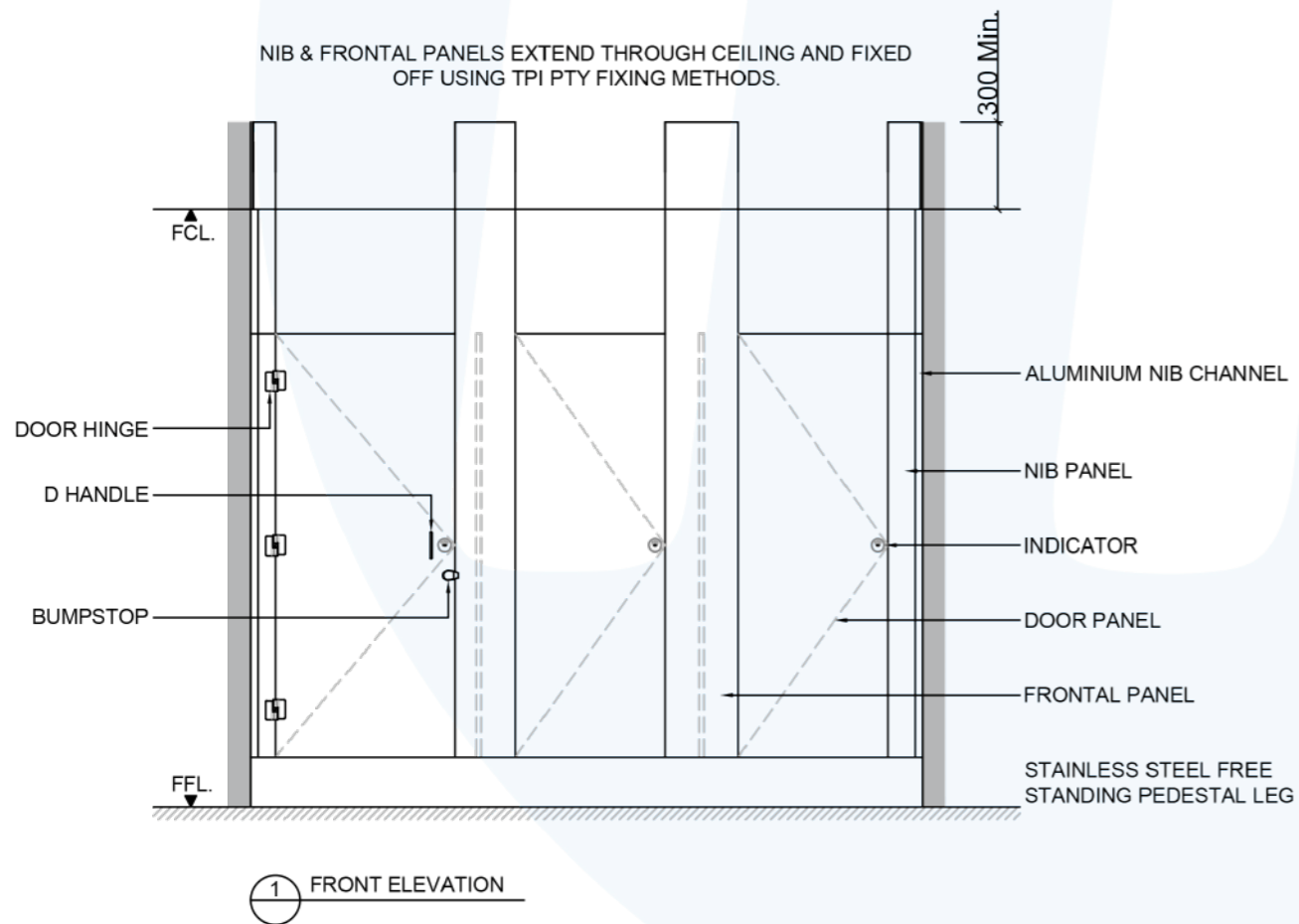
A Division of Toilet Partition Industries Pty Ltd ABN 51 075 780 371

Head office: 123 Eldridge Rd Condell Park NSW 2200 Postal: PO Box 383 Condell Park NSW 2200  
Phone: 02 9709 6501 or 1300 400 711 Fax: 02 9709 6641 E-mail: info@tpi.net.au www.tpi.net.au  
Australia Wide | New Zealand | Singapore | China, Hong Kong, Macau.



2 SECTION

NIB & FRONTAL PANELS EXTEND THROUGH CEILING AND FIXED OFF USING TPI PTY FIXING METHODS.



SYSTEM

TPI-CS: CEILING SUSPENDED

MATERIAL AVAILABILITY

- 13mm Compact Laminate
- 32mm Laminated MR MDF w/ 18mm Divisions
- 32mm Timber Veneer w/ 18mm Divisions

NOTES:

ALL FIXINGS SCREWS ARE 304 GRADE STAINLESS STEEL

NOT TO SCALE

ALL DIMENSIONS ARE IN MILLIMETRES. FIGURED DIMENSIONS ARE NOMINAL ONLY. DO NOT SCALE OFF DRAWING. THIS DESIGN IS COPYRIGHT AND MAY NOT BE USED WITHOUT THE WRITTEN PERMISSION OF THE DESIGNER

DRAWING

TPI-CS DESIGN

ISSUE / REVISION: 02

DWG NO.

TPI-CS

DATE DRAWN 10.5.16

DRAWN BY PB

APPROVED BY:

*MGS*

