

PRODUCT DETAILS



TOILET CUBICLE – RECESSED PEDESTAL OVERHEAD BRACED (RO)



An original TPI design the RO cubicle system floats in space by hiding its structural elements beyond the sight line of the external observer.

The RO cubicle system is a premium choice for prestige projects.

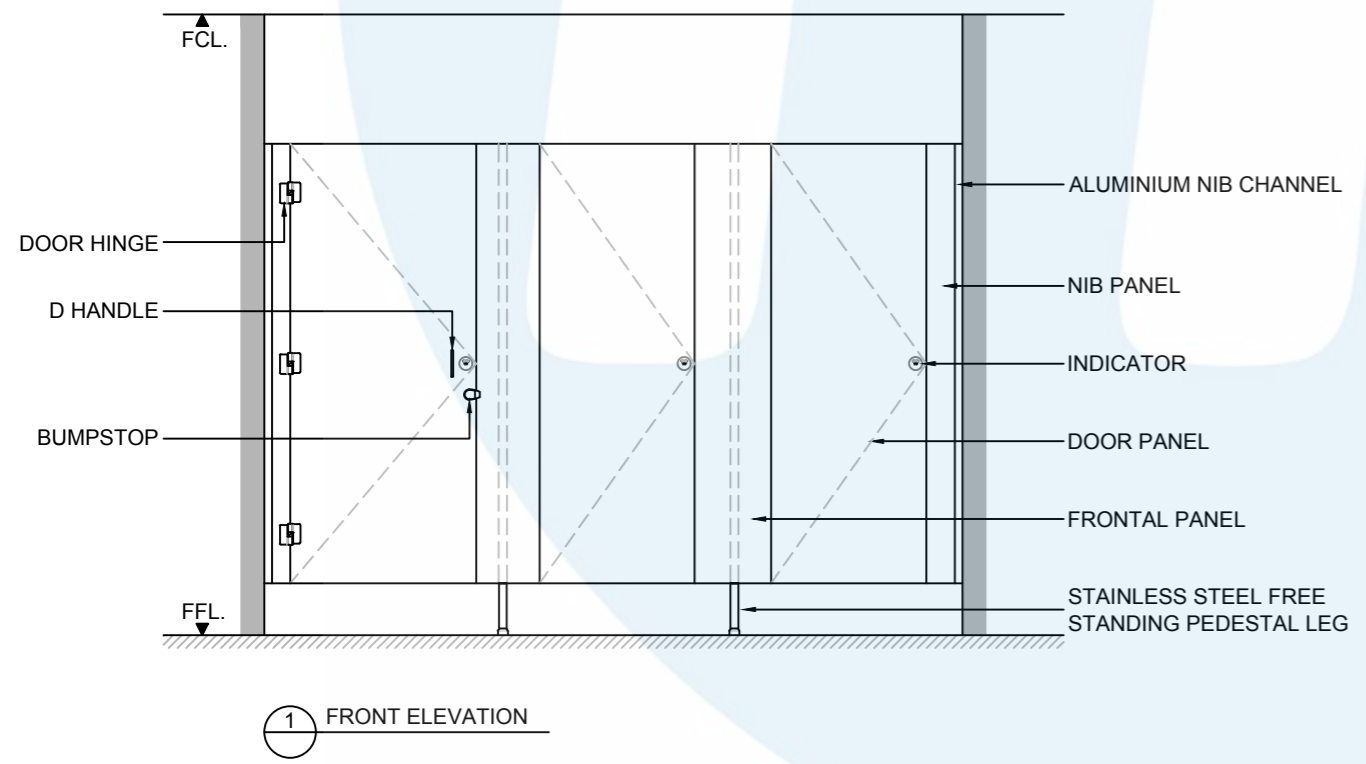
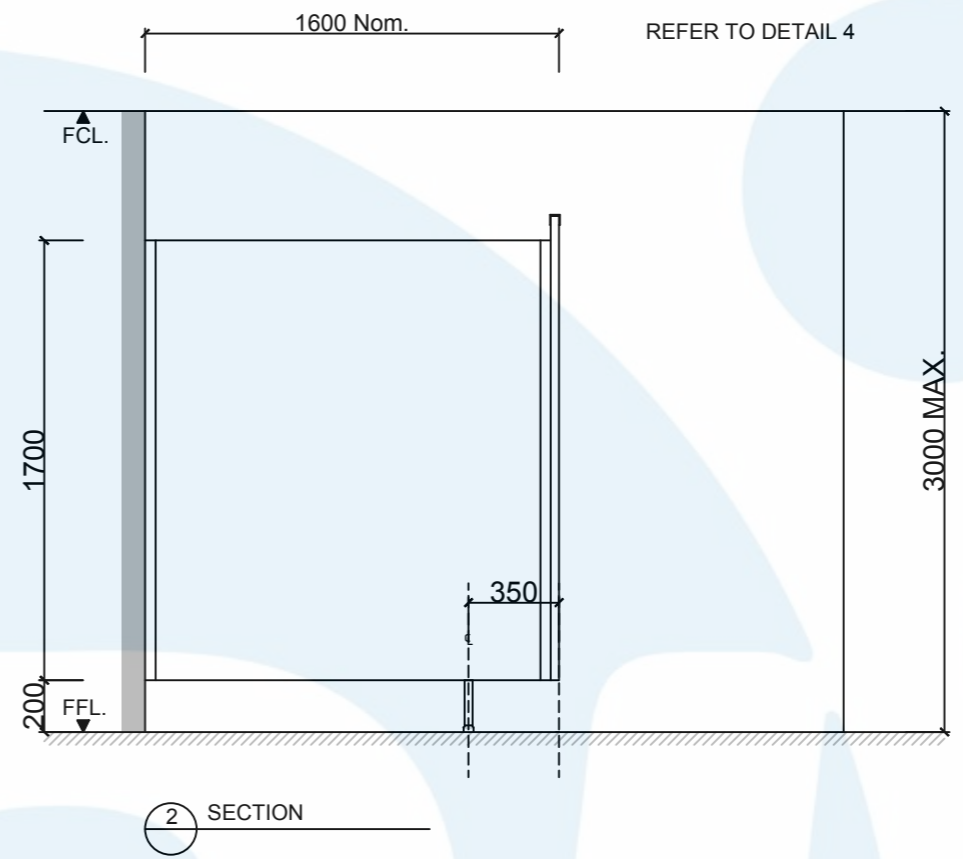
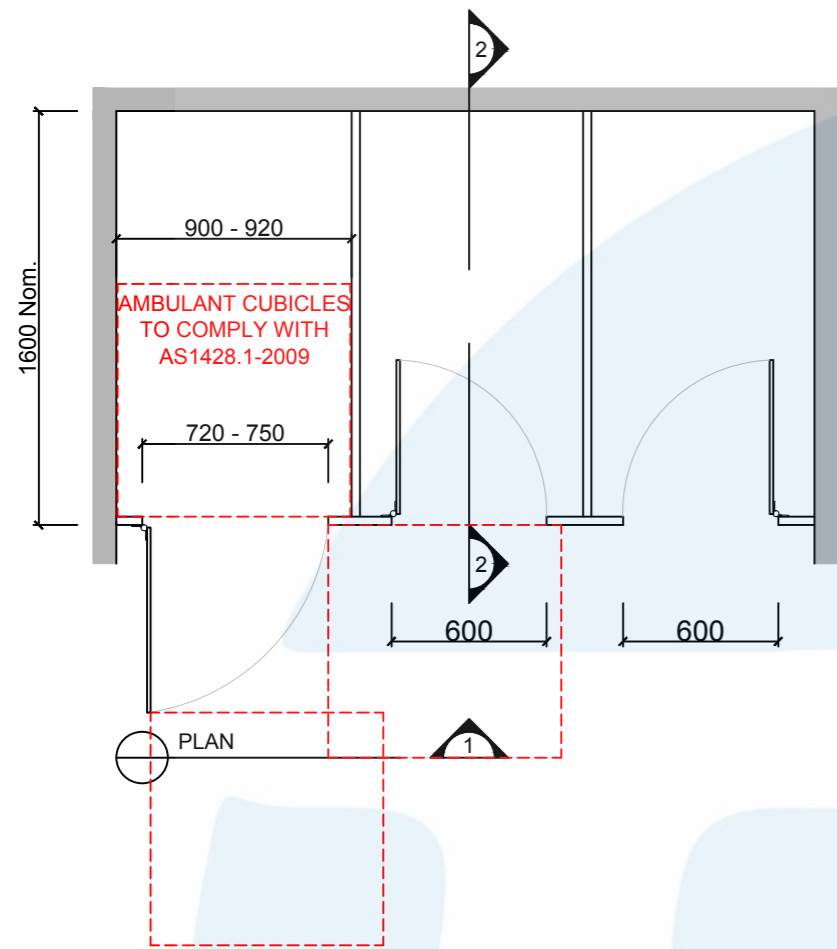
Available as Supply & Install only.

How to Specify TPI's Recommended Configuration

TPI R032L Recessed Pedestal Overhead braced in 32mm Laminated Board Board. Pedestal mount is a 200mm. Door Furniture to be Metlam Xcel series. Aluminium to be Square Clear Anodised. Screw fixing.

Additional Information

Standard Dimensions	Height: Up to 3000mm maximum Depth: 1600mm nominal Frontal: 200mm minimum (w) Doors: 1700mm (h) x 595mm (w) – 600mm opening Ambulant Doors: 1700 (h) x 720-750mm (w) Floor Clearance: 200mm
Material Options	32mm Laminated Board
Pedestal Leg	200mm stainless steel leg (d 32mm) / Powder coating colour (optional)
Door Furniture	Metlam® Xcel series (standard) Metlam® Xcel series Black (optional) Novas Pinnacle (optional) Novas Ultima (optional) Metlam® 300 (optional) Allgood Modric (optional 32mm board only)
Aluminium Profile	Square Clear Anodised Square Powdercoated Round Clear Anodised Round Powdercoated



SYSTEM

TPI-RPO: RECESSED PEDESTAL MOUNTED & OVERHEAD BRACED

MATERIAL AVAILABILITY

- 32mm Laminated MR MDF w/ 32mm Divisions
- 32mm Timber Veneer w/ 32mm Divisions

NOTES:

ALL FIXINGS SCREWS ARE 304 GRADE STAINLESS STEEL

NOT TO SCALE

ALL DIMENSIONS ARE IN MILLIMETRES. FIGURED DIMENSIONS ARE NOMINAL ONLY. DO NOT SCALE OFF DRAWING. THIS DESIGN IS COPYRIGHT AND MAY NOT BE USED WITHOUT THE WRITTEN PERMISSION OF THE DESIGNER

DRAWING

TPI-BCbtc DETAILED DESIGN

ISSUE / REVISION: 01

DWG NO.

TPI-RPO

DATE DRAWN 8.3.16

DRAWN BY PB

APPROVED BY:

MGS

