

# PRODUCT DETAILS



## TOILET CUBICLE – RECESSED PEDESTAL CEILING FIXED (RC)



RC-A ANGLE FIXED  
(CEILING FIXINGS DISCREET)



RC-O CHANNEL FIXED  
(ALUMINIUM AT CEILING JOINT)

An original TPI design, the RC has recessed, hidden, single-pedestal-mounts anchoring it to the floor. This allows the RC to 'float'. Overhead the cubicle connects to the ceiling. With both top and bottom fixings the RC cubicle is solid making its light, floating design suitable for high traffic areas, even with a heavier XL door. Airy in appearance yet robust and suitable for any setting. A cleaners dream.

The RC cubicle is manufactured in all materials (except stone) and sits on a 200mm pedestal mount.

Available as Supply & Install only.

### How to Specify TPI's Recommended Configuration

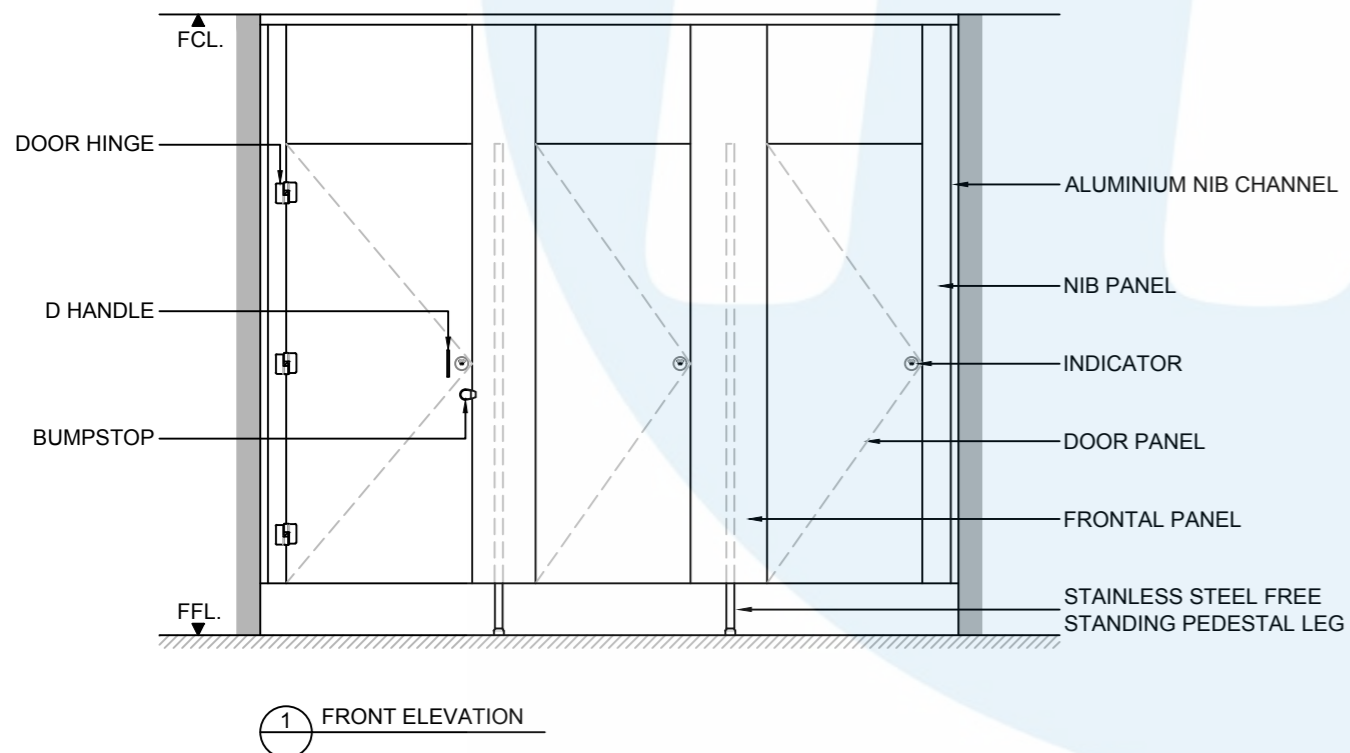
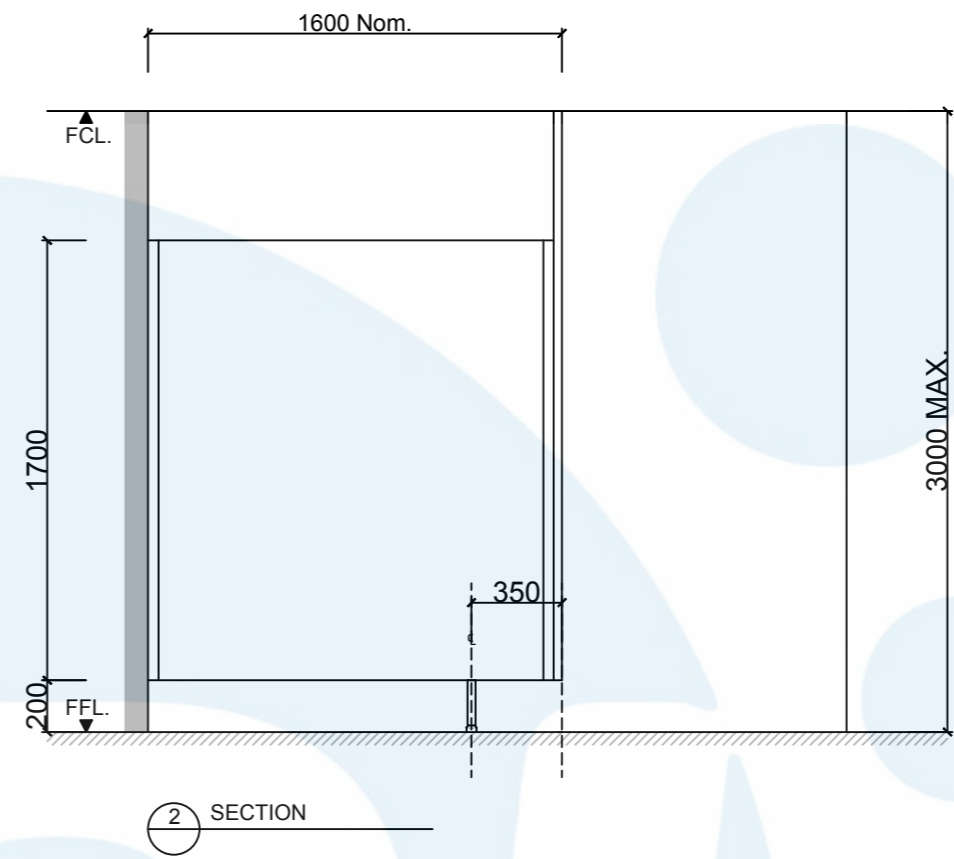
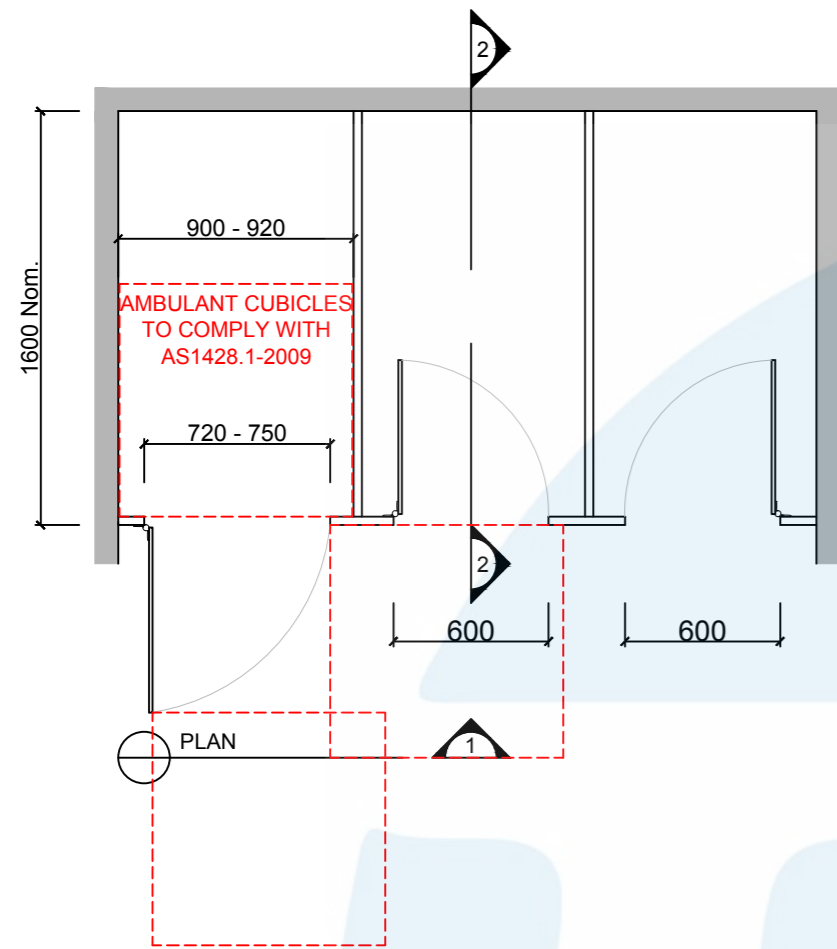
*TPI RC32L Recessed pedestal Ceiling fixed in 32mm Laminated Board. Pedestal to be 200mm Aluminium leg. Door Furniture to be Metlam Xcel series. Aluminium to be Square Clear Anodised. Screw fixing.*

### Additional Information

<b>Standard Dimensions</b>	Height: Up to 3000mm maximum Depth: 1600mm nominal Frontal: 200mm minimum (w) Doors: 1700mm (h) x 595mm (w) – 600mm opening Ambulant Doors: 1700 (h) x 720-750mm (w) Floor Clearance: 200mm
<b>Ceiling Fixing</b>	RCa – Angle Fixed (fixings discreet) RCo – Continuous Channel (aluminium channel visible at ceiling joint)
<b>Material Options</b>	32mm Laminated Board
<b>Pedestal Leg</b>	200mm Aluminium leg (d 32mm)
<b>Door Furniture</b>	Metlam® Xcel series (standard) Metlam® Xcel series Black (optional) Novas Pinnacle (optional) Novas Ultima (optional) Metlam® 300 (optional) Allgood Modric (optional 32mm board only)
<b>Aluminium Profile</b>	Square Clear Anodised Square Powdercoated
<b>XL Door Option</b>	With XL doors as close as 55mm to the ceiling and 20mm off the floor, the RC XL Door Option creates a wall of texture and colour showcasing materials while creating maximum privacy.

A Division of Toilet Partition Industries Pty Ltd ABN 51 075 780 371

Head office: 123 Eldridge Rd Condell Park NSW 2200 Postal: PO Box 383 Condell Park NSW 2200  
Phone: 02 9709 6501 or 1300 400 711 Fax: 02 9709 6641 E-mail: info@tpi.net.au www.tpi.net.au  
Australia Wide | New Zealand | Singapore | China, Hong Kong, Macau.



<b>SYSTEM</b>
TPI-RPC: RECESSED PEDESTAL MOUNTED & CEILING FIXED
<b>MATERIAL AVAILABILITY</b>
<ul style="list-style-type: none"> <li>32mm Laminated MR MDF w/ 32mm Divisions</li> <li>32mm Timber Veneer w/ 32mm Divisions</li> </ul>
<b>NOTES:</b>
ALL FIXINGS SCREWS ARE 304 GRADE STAINLESS STEEL
<b>NOT TO SCALE</b>
ALL DIMENSIONS ARE IN MILLIMETRES. FIGURED DIMENSIONS ARE NOMINAL ONLY. DO NOT SCALE OFF DRAWING. THIS DESIGN IS COPYRIGHT AND MAY NOT BE USED WITHOUT THE WRITTEN PERMISSION OF THE DESIGNER

<b>DRAWING</b>	
TPI-BcBtc DETAILED DESIGN	
ISSUE / REVISION:	01
DWG NO.	
<b>TPI-RPC</b>	
DATE DRAWN	8.3.18
DRAWN BY	PB
APPROVED BY:	

*MGS*

