

PRODUCT DETAILS



SHOWER- PEDESTAL MOUNTED CEILING FIXED (PC-S)



The TPI Pedestal mounted Ceiling fixed (PC) shower partition system maximises the feeling of space in low ceiling rooms whilst delivering a streamlined, vertical aesthetic in high ceiling rooms.

Mounted above the wash area, PC panels come in the full range of Compact Laminate.

Available as Supply & Install.

Available as Supply only.

How to Specify TPI's Recommended Configuration

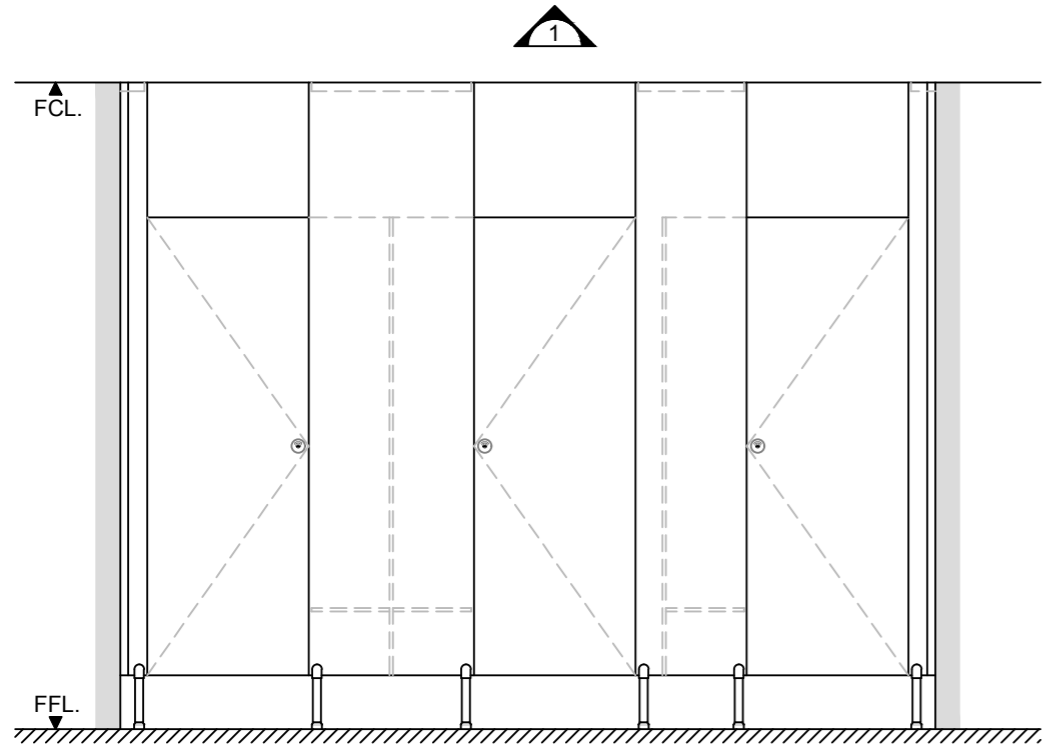
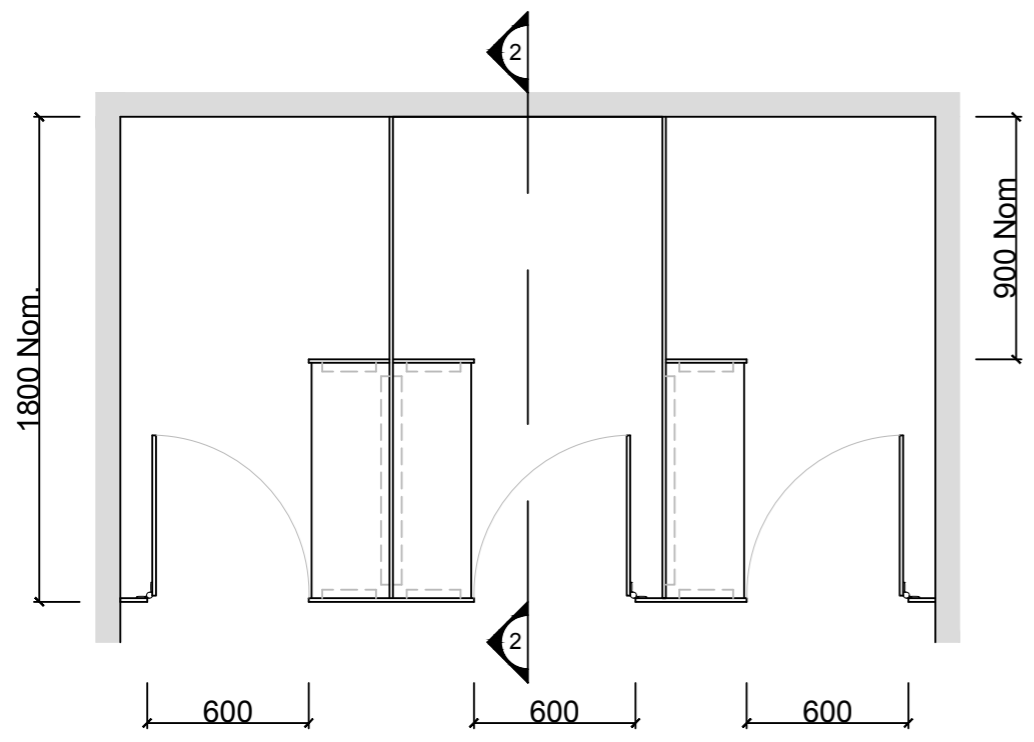
TPI PC13CL Pedestal Mounted Ceiling Fixed in 13mm Compact Laminate. Pedestal to be 200mm Aluminium leg. With Modulux® Total Privacy Solution. Door Furniture to be Metlam Xcel series. Aluminium to be Square Clear Anodised. Screw fixing.

Additional Information

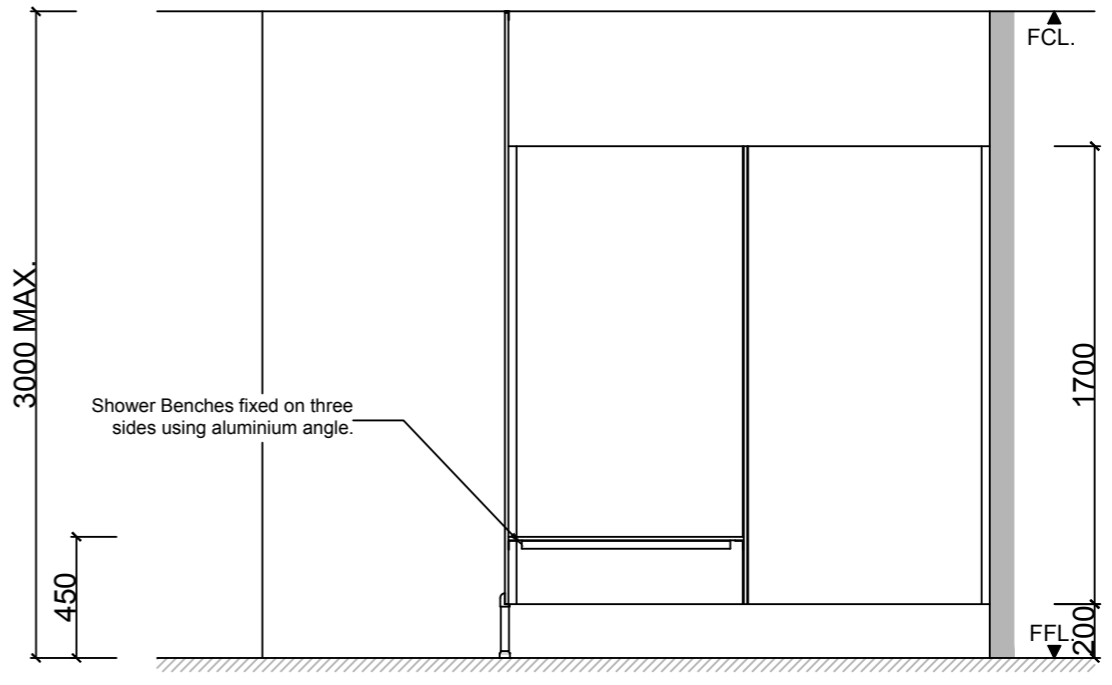
Standard Dimensions	Height: 2400mm (standard) Depth: 1800mm nominal Frontal: 300mm minimum (w) Doors: 1700mm (h) x 595mm (w) – 600mm opening Ambulant Doors: 1700 mm (h) x 720-750mm (w) Shower Seat: 300mm x 900mm nominal Splash Nib: 300mm x 1700mm nominal Floor Clearance: 200mm
Ceiling Fixing	PCa-S – Angle Fixed (fixings discreet but will require secure fixing points above the ceiling) PCo -S- Continuous Channel (aluminium channel visible at ceiling joint). This more robust fixing option and does not require extra secure fixing points.
Material Options	13mm Compact Laminate
Privacy Edge (optional)	TPI's patented Modulux® Total Privacy Solution for the ultimate in cubicle privacy.
Door Furniture	Metlam® Xcel series (standard) Metlam® Xcel series Black (optional) Novas Pinnacle (optional) Novas Ultima (optional) Metlam® 300 (optional)
Aluminium Profile	Square Clear Anodised Square Powdercoated

A Division of Toilet Partition Industries Pty Ltd ABN 51 075 780 371

Head office: 123 Eldridge Rd Condell Park NSW 2200 Postal: PO Box 383 Condell Park NSW 2200
Phone: 02 9709 6501 or 1300 400 711 Fax: 02 9709 6641 E-mail: info@tpi.net.au www.tpi.net.au
Australia Wide | New Zealand | Singapore | China, Hong Kong, Macau.



1 FRONT ELEVATION



2 SECTION

SYSTEM
 TPI-PCa-S: PEDESTAL MOUNTED & CEILING FIXED with ANGLE - SHOWER

MATERIAL AVAILABILITY
 • 13mm Compact Laminate

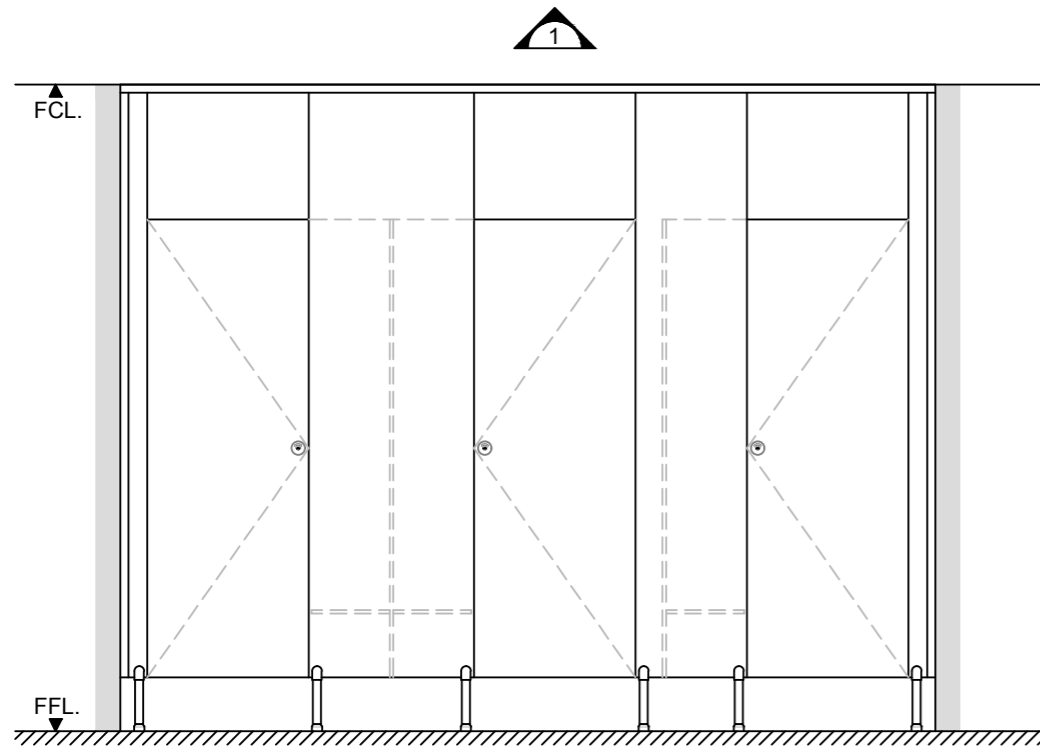
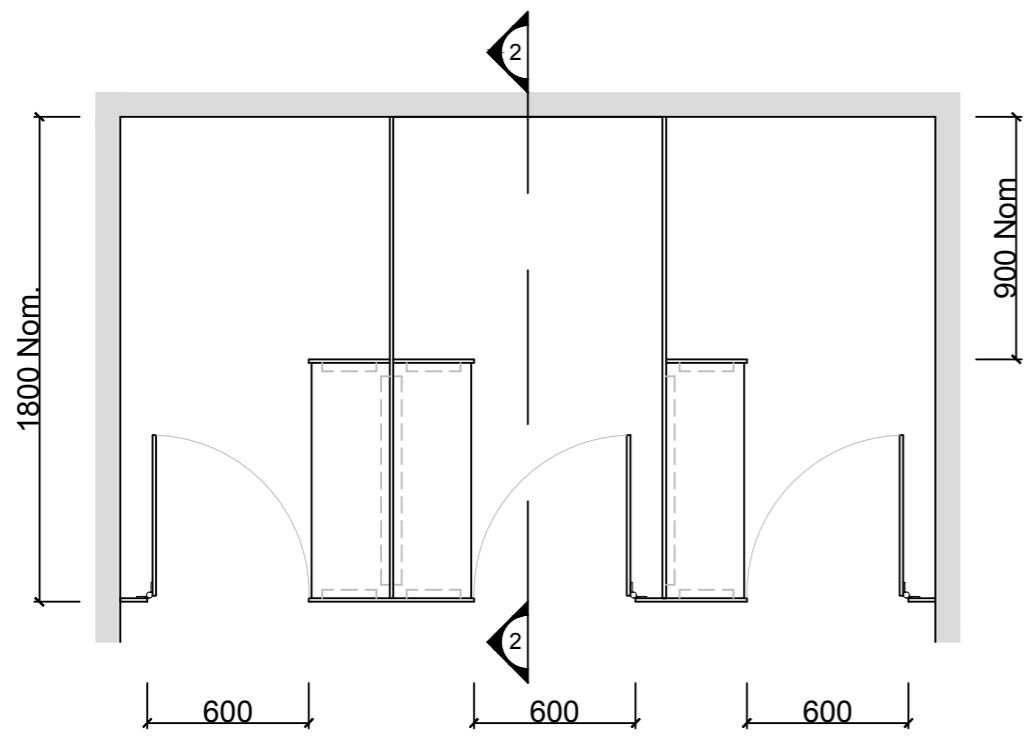
NOTES:
 ALL FIXINGS SCREWS ARE 304 GRADE STAINLESS STEEL

NOT TO SCALE
 ALL DIMENSIONS ARE IN MILLIMETRES. FIGURED DIMENSIONS ARE NOMINAL ONLY. DO NOT SCALE OFF DRAWING. THIS DESIGN IS COPYRIGHT AND MAY NOT BE USED WITHOUT THE WRITTEN PERMISSION OF THE DESIGNER

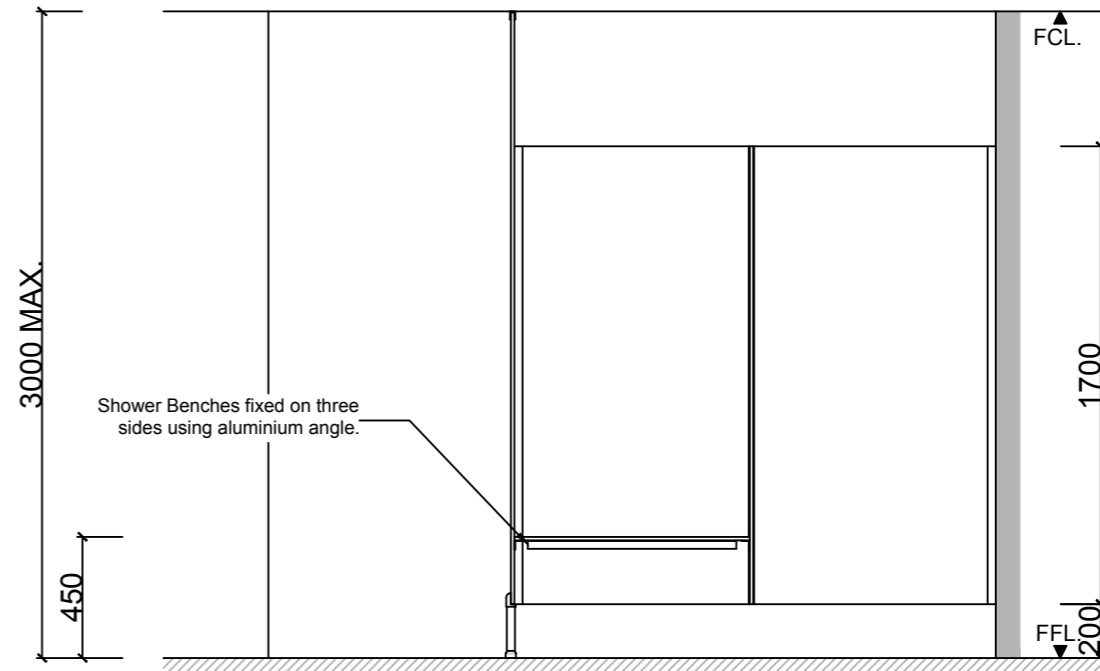
DRAWING	
TPI-PCa-S DETAILED DESIGN	
ISSUE / REVISION:	03
DWG NO.	
TPI-PCa-S	
DATE DRAWN	17.5.17
DRAWN BY	CAP

MGS





1 FRONT ELEVATION



2 SECTION

SYSTEM

TPI-PCo-S: PEDESTAL MOUNTED & CEILING FIXED with FULL LENGTH CHANNEL - SHOWER

MATERIAL AVAILABILITY

- 13mm Compact Laminate

NOTES:

ALL FIXINGS SCREWS ARE 304 GRADE STAINLESS STEEL

NOT TO SCALE

ALL DIMENSIONS ARE IN MILLIMETRES. FIGURED DIMENSIONS ARE NOMINAL ONLY. DO NOT SCALE OFF DRAWING. THIS DESIGN IS COPYRIGHT AND MAY NOT BE USED WITHOUT THE WRITTEN PERMISSION OF THE DESIGNER

DRAWING

TPI-PCo-S DETAILED DESIGN

ISSUE / REVISION: 03

DWG NO.

TPI-PCo-S

DATE DRAWN 17.5.17

DRAWN BY CAP

MGS

