

PRODUCT DETAILS



SHOWER – BLADE MOUNTED CEILING FIXED (BC-S)



BCa-S ANGLE FIXED
(CEILING FIXINGS DISCREET)



BCo-S CHANNEL FIXED
(ALUMINIUM AT CEILING JOINT)

The BC design makes good use of a high ceiling. Sitting tall on blade-mounts, fixed solidly overhead by angle-fixing or an aluminium channel, a row of BC cubicles emphasises the vertical. The firmly anchored frontals mean door & division panels can be extended above standard-height for greater privacy and prestige, while the open floor makes cleaning easy.

Solidly engineered with a strong design flourish, the BC is ideal for surge-venues like pubs, cinemas and shopping centres where easy maintenance and making an impression matter.

Mounted above the wash area, BC panels come in the full range of Compact Laminate material.

Available as Supply & Install.

Available as Supply only.

How to Specify TPI's Recommended Configuration

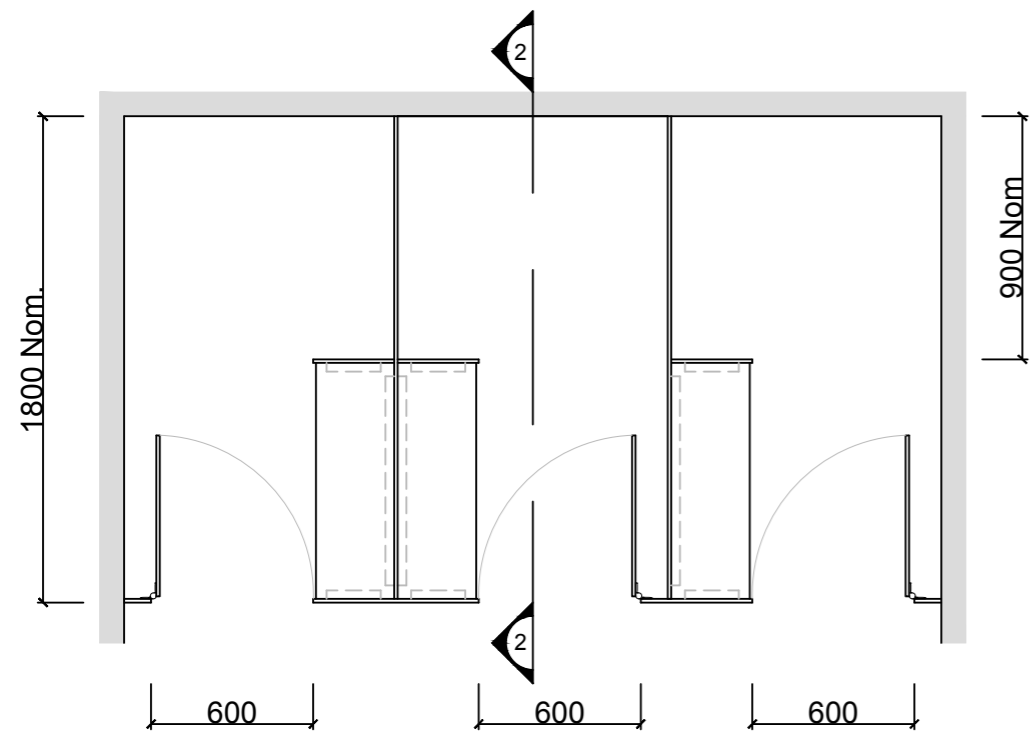
TPI BC-S-13CL Blade mounted Ceiling fixed Shower with seat/shelf and splash nib in 13mm Compact Laminate. With Modulux® Total Privacy Solution. Door Furniture to be Metlam® Xcel series. Screw fixing.

Additional Information

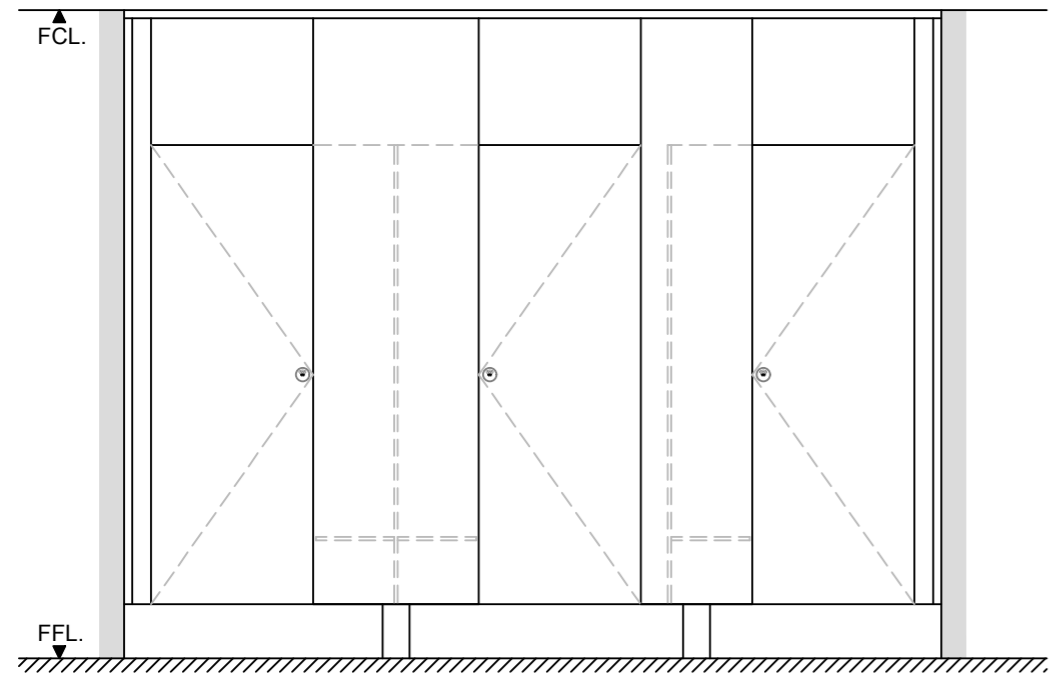
Standard Dimensions	Height: up to 3000mm maximum Depth: 1800mm nominal Frontal: 300mm minimum (w) Doors: 1700mm (h) x 595mm (w) – 600mm opening Ambulant Doors: 1700 (h) x 720-750mm (w) Shower Seat: 300mm x 900mm nominal Splash Nib: 300mm x 1700mm nominal Floor Clearance: 200mm
Ceiling Fixing	BCa-S – Angle Fixed (fixings discreet but will require secure fixing points above the ceiling) BCo-S – Continuous Channel (aluminium channel visible at ceiling joint). This more robust fixing option and does not require extra secure fixing points.
Material Options	13mm Compact Laminate
Privacy Edge (optional)	TPI's patented Modulux® Total Privacy Solution for the ultimate in cubicle privacy.
Door Furniture	Metlam® Xcel series (standard) Metlam® Xcel series Black (optional) Novas Pinnacle (optional) Novas Ultima (optional) Metlam® 300 (optional)
Aluminium Profile	Square Clear Anodised Square Powdercoated

A Division of Toilet Partition Industries Pty Ltd ABN 51 075 780 371

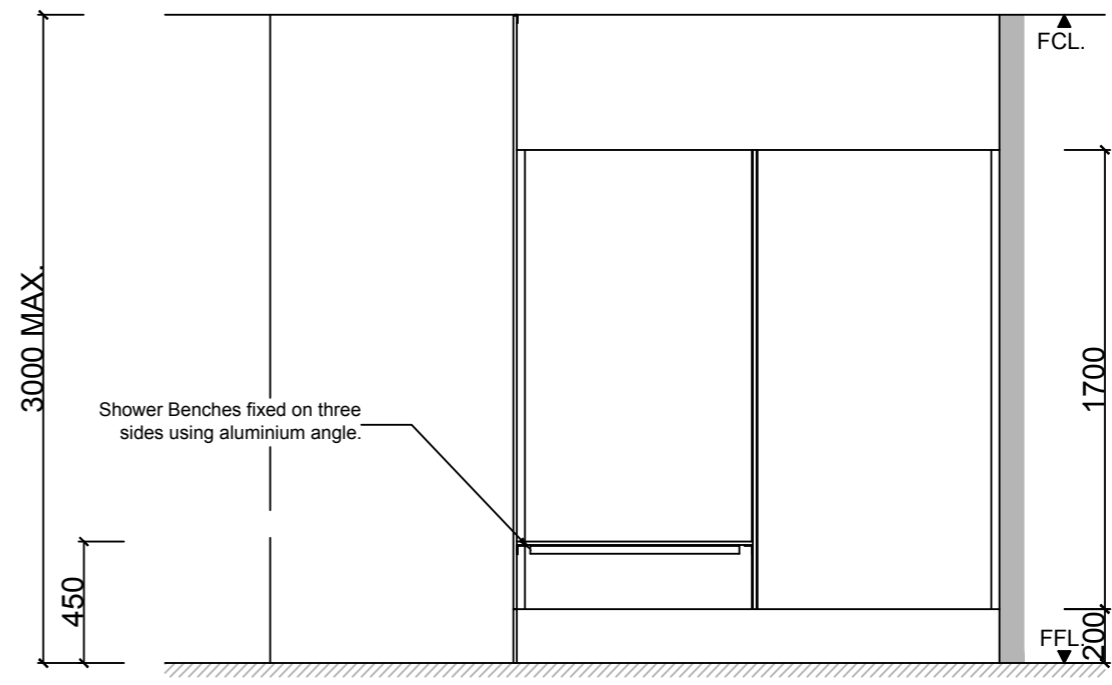
Head office: 123 Eldridge Rd Condell Park NSW 2200 Postal: PO Box 383 Condell Park NSW 2200
Phone: 02 9709 6501 or 1300 400 711 Fax: 02 9709 6641 E-mail: info@tpi.net.au www.tpi.net.au
Australia Wide | New Zealand | Singapore | China, Hong Kong, Macau.



1



1 FRONT ELEVATION



2 SECTION

SYSTEM

TPI-BCo-S: BLADE MOUNTED & CEILING FIXED with FULL LENGTH CHANNEL - SHOWER

MATERIAL AVAILABILITY

- 13mm Compact Laminate

NOTES:

ALL FIXINGS SCREWS ARE 304 GRADE STAINLESS STEEL

NOT TO SCALE

ALL DIMENSIONS ARE IN MILLIMETRES. FIGURED DIMENSIONS ARE NOMINAL ONLY. DO NOT SCALE OFF DRAWING. THIS DESIGN IS COPYRIGHT AND MAY NOT BE USED WITHOUT THE WRITTEN PERMISSION OF THE DESIGNER

DRAWING

TPI-BCo-S DETAILED DESIGN

ISSUE / REVISION: 03

DWG NO.

TPI-BCo-S

DATE DRAWN 17.5.17

DRAWN BY CAP

MGS

